

		2 ^A POMPA 2nd PUMP						
1 ^A POMPA/INTERMEDIA FIRST/INTERMEDIATE PUMP		1P 149200	2PØ52 149200	NPLH UNI 105004	NPH UNI 105011	NPGH UNI 105012	DARK UNI 108005	
	NPLH UNI TANDEM 10500420XXX	X						
	NPH UNI TANDEM 10502300XXX	A	B	C	D			
	NPH ISO TANDEM 10502310XXX	A	B	C	D			
	NPGH UNI TANDEM 10502200XXX	A	B	C	D	D	D	
	NPGH ISO TANDEM 10502210XXX	A	B	C	D	D	D	
	NPGH ISO SHORT TANDEM 10507000XXX	A	B	C	D	D	D	

CODICE APPLICAZIONE PER 2^A POMPA (DA ORDINARE SEPARATAMENTE)
 ASSEMBLY KIT FOR SECOND PUMP (TO BE ORDERED SEPARATELY)

X= Nessuna applicazione aggiuntiva necessaria
 No assembly kit required

A = 10502000101

B= 10502000209

C= 11400000115

D= 11400000106

Алматы (7273)495-231
 Ангарск (3955)60-70-56
 Архангельск (8182)63-90-72
 Астрахань (8512)99-46-04
 Барнаул (3852)73-04-60
 Белгород (4722)40-23-64
 Благовещенск (4162)22-76-07
 Брянск (4832)59-03-52
 Владивосток (423)249-28-31
 Владикавказ (8672)28-90-48
 Владимир (4922)49-43-18
 Волгоград (844)278-03-48
 Вологда (8172)26-41-59
 Воронеж (473)204-51-73
 Екатеринбург (343)384-55-89

Россия +7(495)268-04-70

Иваново (4932)77-34-06
 Ижевск (3412)26-03-58
 Иркутск (395)279-98-46
 Казань (843)206-01-48
 Калининград (4012)72-03-81
 Калуга (4842)92-23-67
 Кемерово (3842)65-04-62
 Киров (8332)68-02-04
 Коломна (4966)23-41-49
 Кострома (4942)77-07-48
 Краснодар (861)203-40-90
 Красноярск (391)204-63-61
 Курск (4712)77-13-04
 Курган (3522)50-90-47
 Липецк (4742)52-20-81

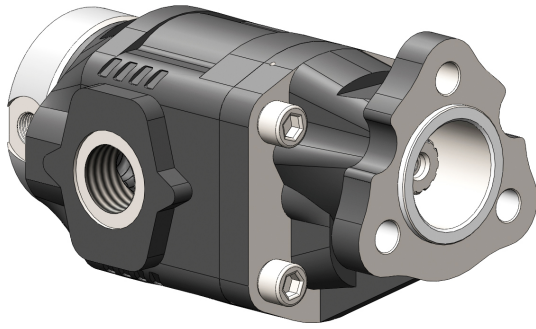
Магнитогорск (3519)55-03-13
 Москва (495)268-04-70
 Мурманск (8152)59-64-93
 Набережные Челны (8552)20-53-41
 Калининград (4012)72-03-81
 Новокузнецк (3843)20-46-81
 Кемерово (3842)65-04-62
 Новосибирск (383)227-86-73
 Омск (3812)21-46-40
 Орел (4862)44-53-42
 Краснодар (861)203-40-90
 Пенза (8412)22-31-16
 Курск (4712)77-13-04
 Петрозаводск (8142)55-98-37
 Псков (8112)59-10-37
 Пермь (342)205-81-47

Казахстан +7(7172)727-132

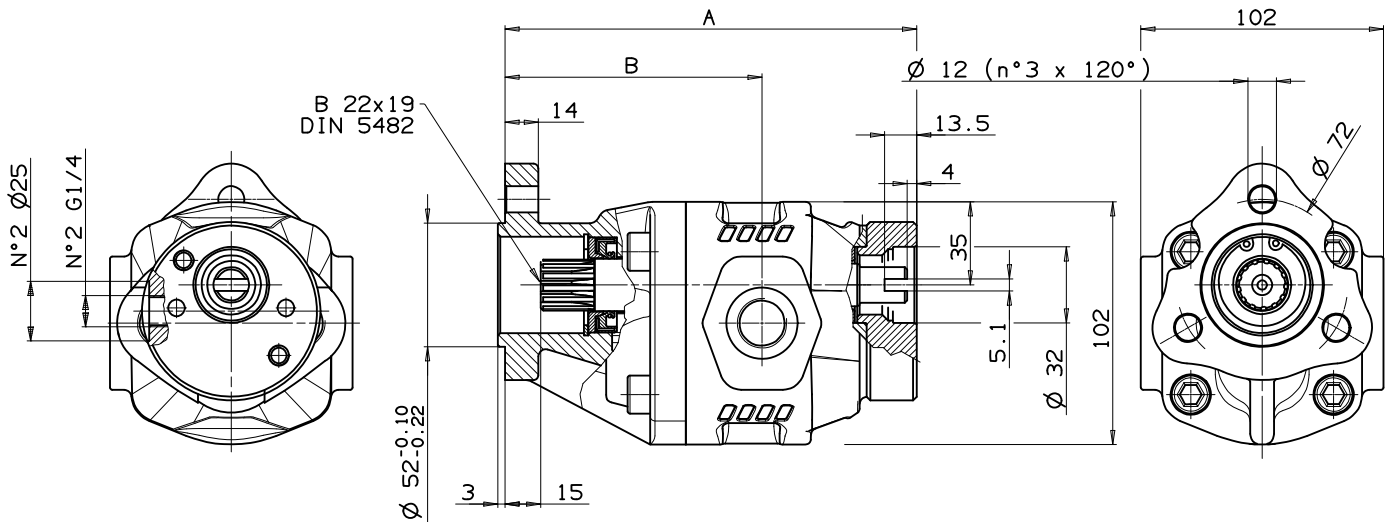
Ростов-на-Дону (863)308-18-15
 Рязань (4912)46-61-64
 Самара (846)206-03-16
 Санкт-Петербург (812)309-46-40
 Саратов (845)249-38-78
 Севастополь (8692)22-31-93
 Саранск (8342)22-96-24
 Симферополь (3652)67-13-56
 Смоленск (4812)29-41-54
 Сочи (862)225-72-31
 Ставрополь (8652)20-65-13
 Сургут (3462)77-98-35
 Сыктывкар (8212)25-95-17
 Тамбов (4752)50-40-97
 Тверь (4822)63-31-35

Киргизия +996(312)96-26-47

Тольятти (8482)63-91-07
 Томск (3822)98-41-53
 Тула (4872)33-79-87
 Тюмень (3452)66-21-18
 Ульяновск (8422)24-23-59
 Улан-Удэ (3012)59-97-51
 Уфа (347)229-48-12
 Хабаровск (4212)92-98-04
 Чебоксары (8352)28-53-07
 Челябинск (351)202-03-61
 Череповец (8202)49-02-64
 Чита (3022)38-34-83
 Якутск (4112)23-90-97
 Ярославль (4852)69-52-93



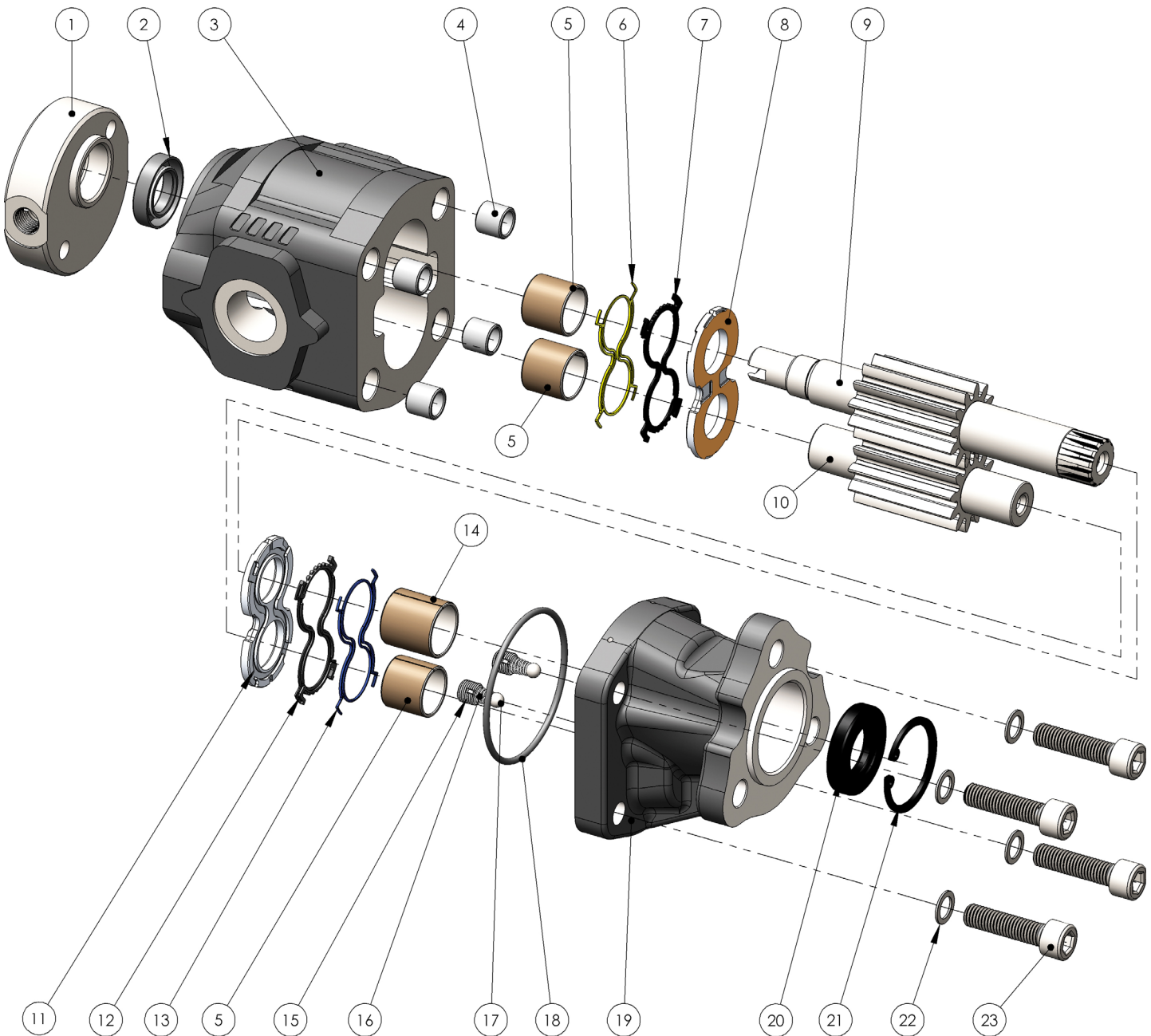
Fluido idraulico <i>Fluid</i>	Minerale o sintetico compatibile con guarnizioni: <i>Mineral or synthetic compatible with the following seals:</i> NBR, FKM, FPM, Nylon				
Viscosità cinematica consigliata <i>Kinematic viscosity suggested</i>	T media ambiente (°C) <i>Average ambient temp. (°C)</i>	< -10	-10÷10	10÷35	> 35
	VG (cSt = mm ² /s)	22	32	46	68
Viscosità cinematica ottimale di esercizio <i>Optimale kinematic viscosity</i>			VG= 10 cSt ÷ 100 cSt		
Viscosità cinematica max consentita all'avviamento <i>Max kinematic viscosity suggested at the start-up</i>			VG= 750 cSt		
Indice di viscosità consigliato <i>Viscosity index suggested</i>		VI > 100	Temperatura di esercizio <i>Working temperature</i> -15°C +100°C		
Grado di filtrazione <i>Oil filtering</i>			> 200 bar: 10 µm < 200 bar: 25 µm		
Pressione di aspirazione / <i>Inlet pressure</i>			-0,3 ÷ 2 bar		
Senso di rotazione / <i>Pump rotation</i>			Bidirezionale/ <i>Bidirectional</i>		

Ingombro / Dimensions

Dati tecnici / Technical data

Tipo pompa <i>Pump type</i>	Codice ordinazione <i>Order code</i>	IN	OUT	A	B	Peso <i>Weight</i>
		ISO 228	ISO 228	mm	mm	Kg
NPLH-6	10500420063	G 1/2	G 1/2	151	98.5	5
NPLH-10	10500420107			157	104.5	5.3
NPLH-16	10500420161			166.5	101.5	5.4
NPLH-20	10500420205			173	108	5.7
NPLH-25	10500420250	G 3/4	G 3/4	181	113	6
NPLH-32	10500420321			192	124	6.2

PREDISPOSTA PER 2^A POMPA GRUPPO 1 CON CODOLO FRESATO
READY FOR 2ND PUMP - GROUP 1 WITH MILLED SHANK

Kit guarnizioni / Seal Kit	
2	10590000277
6	
7	
12	
13	
18	
20	



N°	6	10	16	20	25	32	Codice/Code	Descrizione / Description		Q.
1	52800700835	Flangia	Flange	1
2	50600700180	Guarnizione Paraolio	Oil seal	1
3	.						51703200060	Corpo pompa	Gear housing	1
		.					51703200104			
			.				51703200168			
				.			51703200202			
					.		51703200257			
					.	51703200328				
4	50100300282	Spine forate di centraggio 14x10.5	Pins 14x10.5	4
5	53300400122	Boccole autolub. 20x23x20	Bushing 20x23x20	3
6	50600002390	Guarnizione antiestrusione	Back-up ring	1
7	50600002381	Guarnizione per rasamento	Thrust plate seal	1
8	51001000257A	Rasamento	Thrust plate	1
9	.						52301600067	Albero dentato conduttore	Drive shaft	1
		.					52301600101			
			.				52301600165			
				.			52301600209			
					.		52301600254			
					.	52301600325				
10	.						52301500077	Albero dentato condotto	Driven shaft	1
		.					52301500111			
			.				52301500175			
				.			52301500219			
					.		52301500264			
					.	52301500335				
11	51001000239A	Rasamento	Thrust plate	1
12	50600002336	Guarnizione per rasamento	Thrust plate seal	1
13	50600002345	Guarnizione antiestrusione	Back-up ring	1
14	53300400113	Boccole autolub. 22x25x25	Bushing 22x25x25	1
15	50400000412	Grano valvola lubrificazione	Lube valve screw	2
16	51200400251	Molla conica	Tapered spring	2
17	51000900054	Sfera 1/4"	Ball 1/4"	2
18	50600200701	Guarnizione OR	O-Ring	1
19	51800300250	Coperchio anteriore	Mounting cover	1
20	50602422405	Guarnizione paraolio	Oil seal	1
21	50100100373	Anello seeger	Seeger ring	1
22	50102000101	Rondella elastica	Washer	4
23	.	.					50200400565	Vite TCE M10x35	Screw M10x35	4
24			50200400574	Vite TCE M10x40	Screw M10x40	4

CARATTERISTICHE TECNICHE DI FUNZIONAMENTO - TECHNICAL FEATURES

Tipo pompa Pump type	Cilindrata Displacement cm ³ /rev	Pressione Pressure			Velocità max. continua Max. continuous speed rpm	Velocità max. intermittente Max. intermittent speed rpm	Velocità min. Min. speed rpm
		P1	P2	P3			
		bar	bar	bar			
NPLH-6	6,288	280	310	325	2200	3000	300
NPLH-10	10,062						
NPLH-16	16.035						
NPLH-20	20.123	260	280	290			
NPLH-25	25.154	220	250	260			
NPLH-32	32.042	190	210	220	2000	2800	

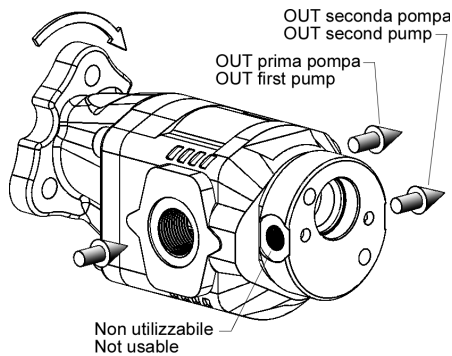
P1=Pressione max.continua
 P2=Pressione max. intermittente
 P3=Pressione max. di punta

Max. continuous pressure
 Max. Intermittent pressure
 Max. peak pressure

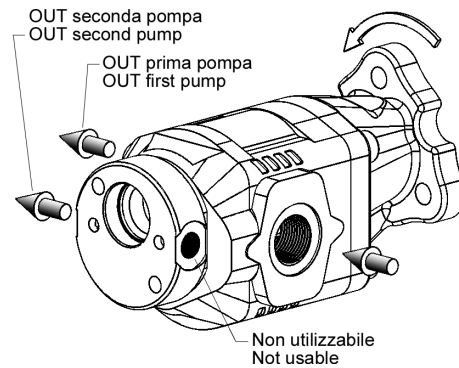
(100%)
 (20 sec.max.)
 (6 sec.max)

IDENTIFICAZIONE ASPIRAZIONE/MANDATA / SUCTION/DELIVERY IDENTIFICATION:

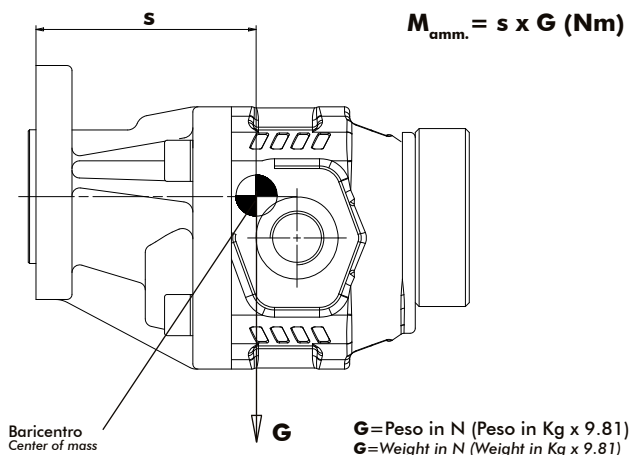
Rotazione antioraria, pompa sinistra
 Anti-clockwise rotation, left pump



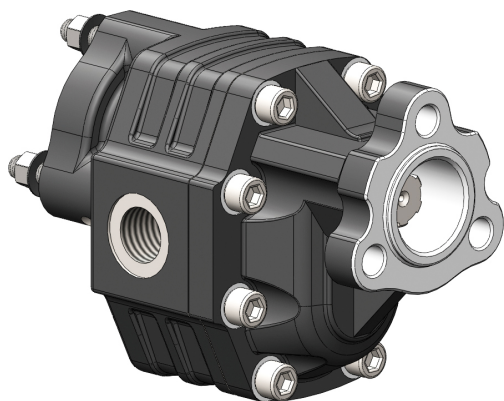
Rotazione oraria, pompa destra
 Clockwise rotation, right pump



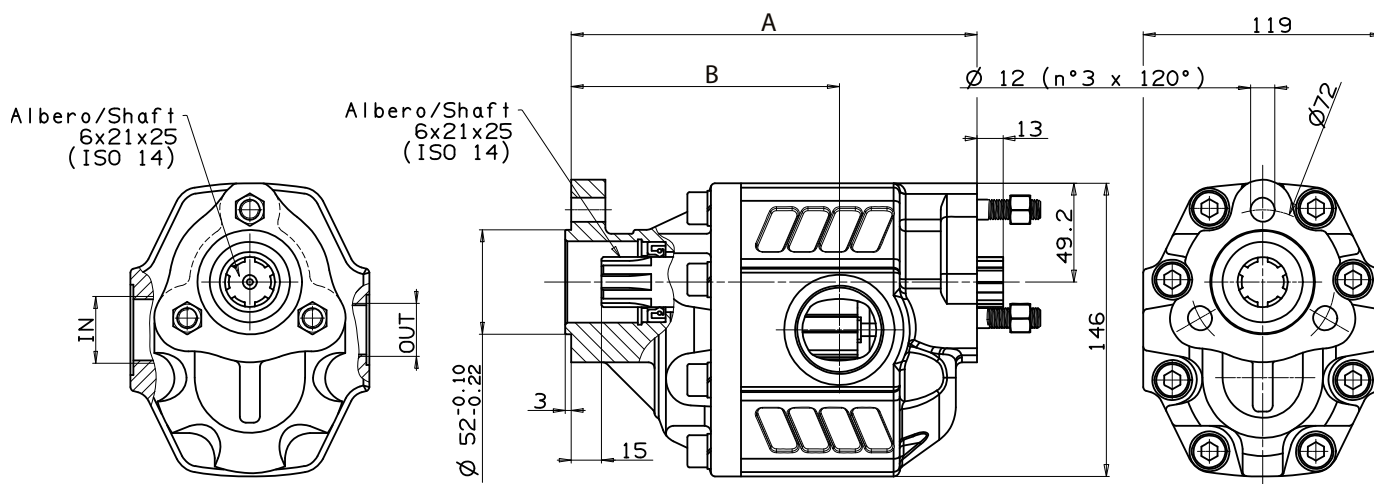
MOMENTO PESO / MASS MOMENT



Tipo pompa - Pump type	S
NPLH-6	85
NPLH-10	89
NPLH-16	94
NPLH-20	98
NPLH-25	103
NPLH-32	109



Fluido idraulico <i>Fluid</i>	Minerale o sintetico compatibile con guarnizioni: <i>Mineral or synthetic compatible with the following seals:</i> NBR, FKM, FPM, Nylon				
Viscosità cinematica consigliata <i>Kinematic viscosity suggested</i>	T media ambiente (°C) <i>Average ambient temp. (°C)</i>	< -10	-10÷10	10÷35	> 35
	VG (cSt = mm ² /s)	22	32	46	68
Viscosità cinematica ottimale di esercizio <i>Optimale kinematic viscosity</i>			VG= 10 cSt ÷ 100 cSt		
Viscosità cinematica max consentita all'avviamento <i>Max kinematic viscosity suggested at the start-up</i>			VG= 750 cSt		
Indice di viscosità consigliato <i>Viscosity index suggested</i>	VI > 100	Temperatura di esercizio <i>Working temperature</i> -15°C +100°C			
Grado di filtrazione <i>Oil filtering</i>			> 200 bar: 10 µm < 200 bar: 25 µm		
Pressione di aspirazione <i>Inlet pressure</i>			-0,3 ÷ 2 bar		
Senso di rotazione <i>Pump rotation</i>			Unidirezionale <i>Unidirectional</i>		

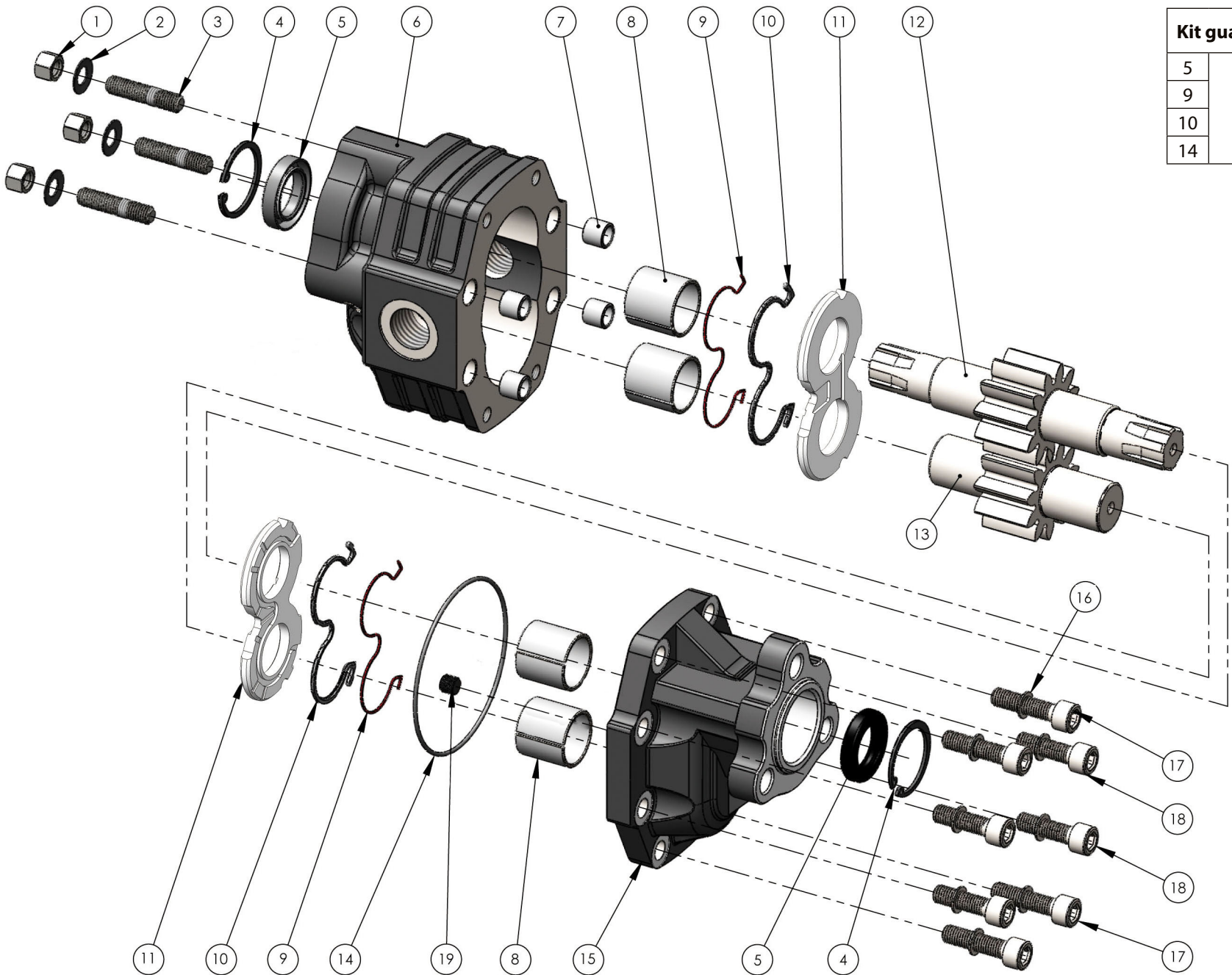
Ingombro / Dimensions

Dati tecnici / Technical data

Tipo pompa <i>Pump type</i>	Rotazione <i>Rotation</i>		IN <i>ISO 228</i>	OUT <i>ISO 228</i>	A <i>mm</i>	B <i>mm</i>	Peso <i>Weight</i> <i>Kg</i>
	<i>Destra / Right</i>	<i>Sinistra / Left</i>					
NPH-17	10502300171	10502300180	G 1/2		164	103	9.6
NPH-22	10502300224	10502300233			167.5	105.5	9.8
NPH-27	10502300279	10502300288			170	108	10.1
NPH-34	10502300340	10502300359	G 3/4		175	108	10.5
NPH-43	10502300439	10502300448			181	114	11.02
NPH-51	10502300519	10502300528	G 1		186	114.5	11.3
NPH-61	10502300617	10502300626			192	120.5	11.8
NPH-73	10502300733	10502300742			200	119.5	12.4
NPH-82	10502300822	10502300831	G 1 1/4		205	126.5	12.6

PREDISPOSTA PER 2^A POMPA CON FLANGIA UNI
READY FOR 2ND PUMP WITH UNI FLANGE

Kit guarnizioni / Seal Kit

5	10590000259
9	
10	
14	



N°	17	22	27	34	43	51	61	73	82	Codice/Code	Descrizione / Description	Q.
1	50500400014	Dado M10 CH14 H10 Nut M10 CH14 H10	3
2	50101800105	Rondella elastica Washer	3
3	50300400198	Prigioniero M10x30 Stud bolt M10x30	3
4	50100100373	Anello seeger Seeger ring	2
5	50602425401	Guarnizione paraolio Oil seal	2
6	.									51700900175	Corpo pompa Gear housing	1
		.								51700900228		
			.							51700900273		
				.						51700900344		
					.					51700900433		
						.				51700900513		
							.			51700900611		
							.		51700900737			
								.	51700900826			
7	50100300282	Spine forate di centraggio 14x12.5 Pins 14x12.5	4
8	53300400033	Boccola autolub. 28x32x30 Bushing 28x32x30	4
9	50600001097	Guarnizione antiestrusione Back-up ring	2
10	50600001088	Guarnizione per rasamento Thrust plate seal	2
11	51001000293	Rasamento ad occhiale Thrust plate	2
12	.									52302200176	Albero dentato conduttore Drive shaft	1
		.								52302200229		
			.							52302200274		
				.						52302200345		
					.					52302200434		
						.				52302200514		
							.			52302200612		
								.		52302200710		
								.	52302200827			
13	.									52302400174	Albero dentato condotto Driven shaft	1
		.								52302400227		
			.							52302400272		
				.						52302400343		
					.					52302400432		
						.				52302400512		
							.			52302400610		
							.		52302400736			
								.	52302400825			
14	50600001579	Guarnizione OR O-ring	1
15	51800300107	Coperchio anteriore Mounting cover	1
16	50102000101	Rondella elastica Washer	8
17	50200400574	Vite TCE M10x40 Screw M10x40	8
							.	.	.			4
18							.	.	.	50200400565	Vite TCE M10x35 Screw M10x35	4
19	50401000063	Grano conico 1/8" Plug 1/8"	1

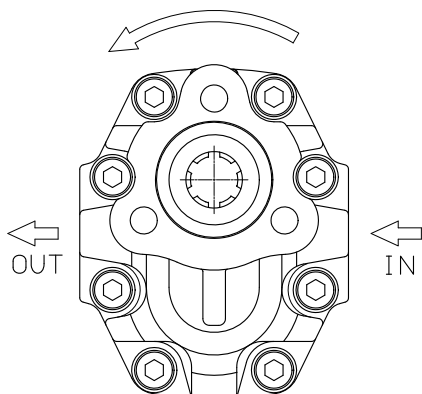
CARATTERISTICHE TECNICHE DI FUNZIONAMENTO - TECHNICAL FEATURES

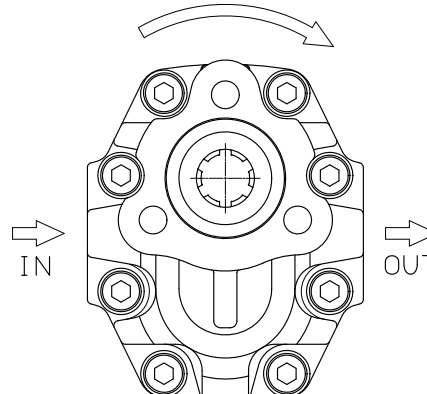
Tipo pompa Pump type	Cilindrata Displacement cm ³ /rev	Pressione Pressure			Velocità max. continua Max. continuous speed rpm	Velocità max. intermittente Max. intermittent speed rpm	Velocità min. Min. speed rpm
		P1	P2	P3			
		bar	bar	bar			
NPH-17	17.04	290	315	325	2500	3000	300
NPH-22	22.15						
NPH-27	26.18						
NPH-34	33.88	280	300	310	2200	2800	
NPH-43	43.12	270	290	300	2000	2500	
NPH-51	50.82	240	260	280			
NPH-61	60.06	220	240	250	1800	2000	
NPH-73	72.88	200	220	230	1600	1800	
NPH-82	81.08	190	210	220	1500		

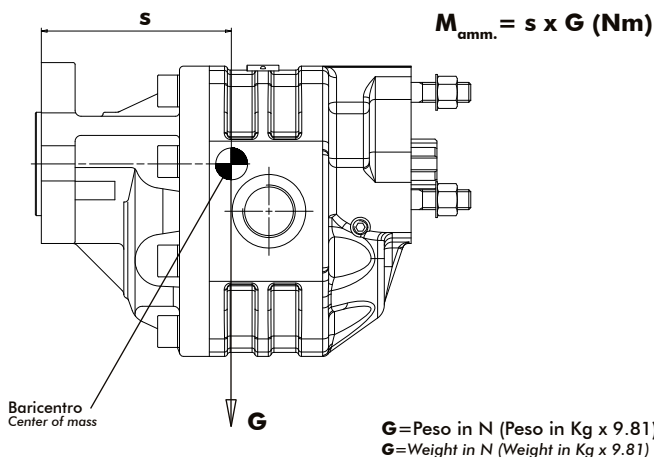
P1=Pressione max.continua
P2=Pressione max. intermittente
P3=Pressione max. di punta

Max. continuous pressure
Max. Intermittent pressure
Max. peak pressure

(100%)
(20 sec.max.)
(6 sec.max)

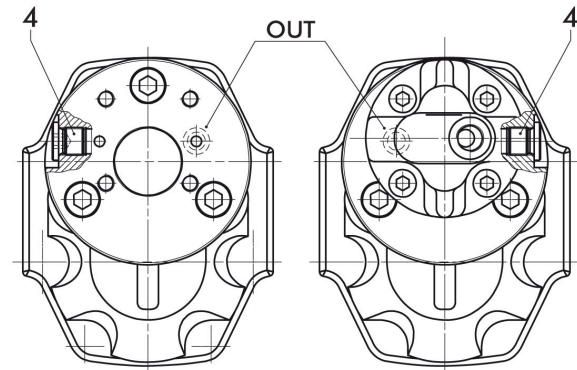
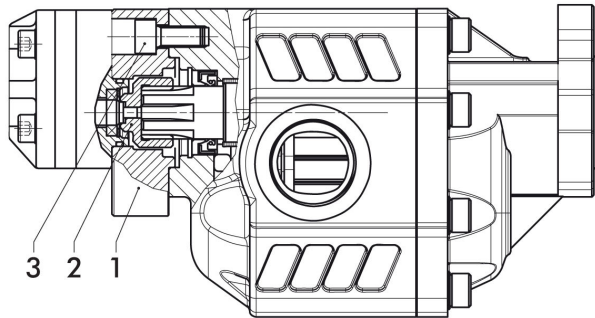
IDENTIFICAZIONE ASPIRAZIONE/MANDATA / SUCTION/DELIVERY IDENTIFICATION:
Rotazione antioraria, pompa sinistra
Anti-clockwise rotation, left pump

Vista FRONTALE
FRONT

Rotazione oraria, pompa destra
Clockwise rotation, right pump

Vista FRONTALE
FRONT

MOMENTO PESO / MASS MOMENT


Tipo pompa - Pump type	S
NPH-17	95
NPH-22	97
NPH-27	99
NPH-34	101
NPH-43	104
NPH-51	107
NPH-61	111
NPH-73	115
NPH-82	119

PER MODIFICARE IL SENSO DI ROTAZIONE VEDERE ISTRUZ. 99700200060
TO CHANGE THE DIRECTION OF ROTATION SEE INSTRUCTION 99700200060

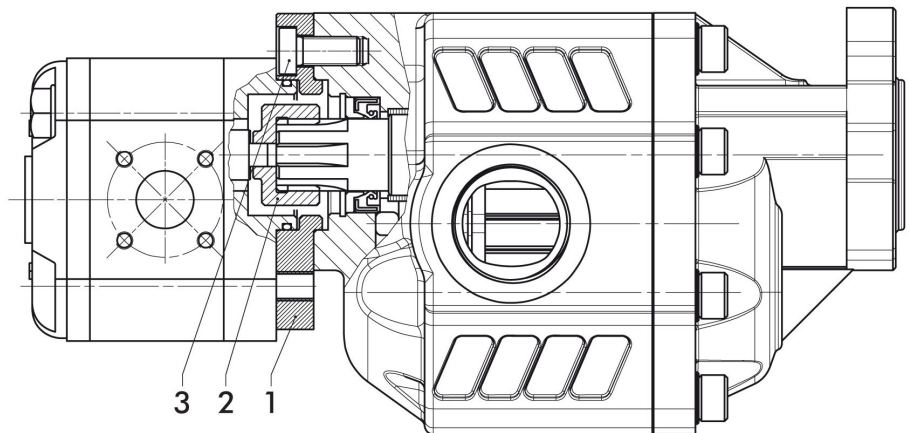
Pompe 1P
1P pumps

 Montaggio pompa 1P Dx
 Mounting pump 1P R

 Montaggio pompa 1P Sx
 Mounting pump 1P L

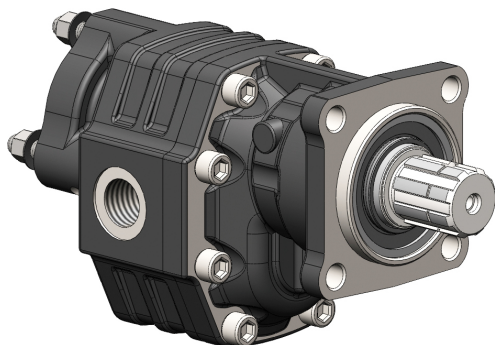
Kit montaggio codice: 10502000101
Mounting kit:
Coppia max.
Max. torque 21,5 Nm

Pos.	Codice Code	Descrizione Description	Q.
1	52800700817	Flangia per montaggio pompe 1P Destra/Sinistra Mounting flange for pumps 1P Left/Right	1
2	11400400853	Manicotto Coupling	1
3	50200400538	Vite TCE M10x22 UNI 5931 CL 12.9 Hex head screw M10x22 UNI 5931 CL 12.9	3
4	11500600117	Tappo TCE 1/4" DIN 908 Hex head plug 1/4" DIN 908	1

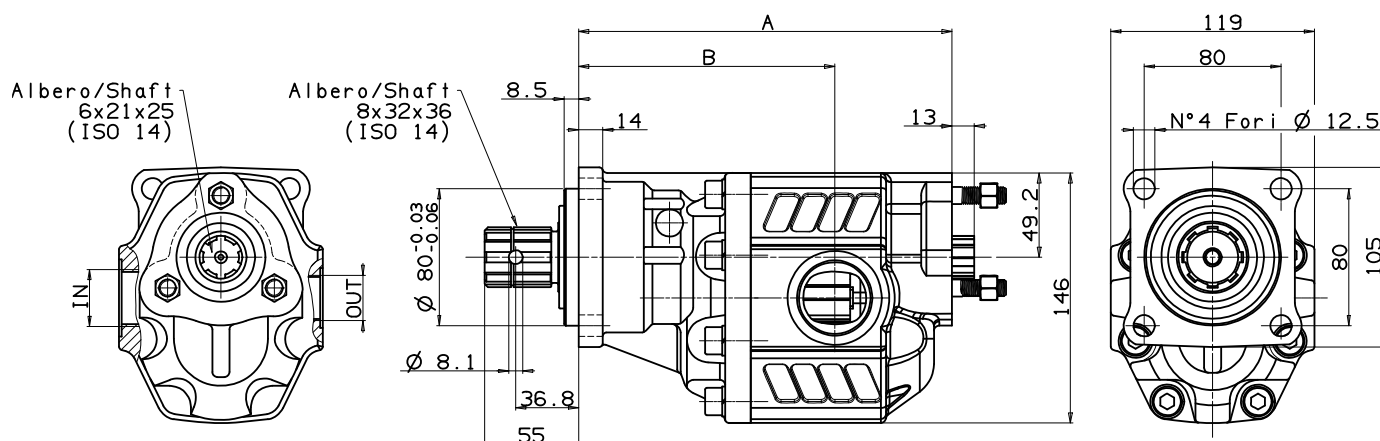
Pompe 2P
2P pumps

L'applicazione è da utilizzare solo con le pompe:
The assembly should be used only with the following pumps:
14920009433 4cc destra/right
14920009442 4cc sinistra/left
14920009451 6cc destra/right
14920009460 6cc sinistra/left

Kit montaggio codice: 10502000209
Mounting kit:
Coppia max.
Max. torque 70 Nm

Pos.	Codice Code	Descrizione Description	Q.tà Q.ty
1	52800700808	Flangia per montaggio pompe 2P Mounting flange for pumps 2P	1
2	11400400844	Manicotto Coupling	1
3	50200000149	Vite TCE M10x22 DIN 7984 CL 10.9 Hex head screw M10x22 DIN 7984 CL 10.9	3



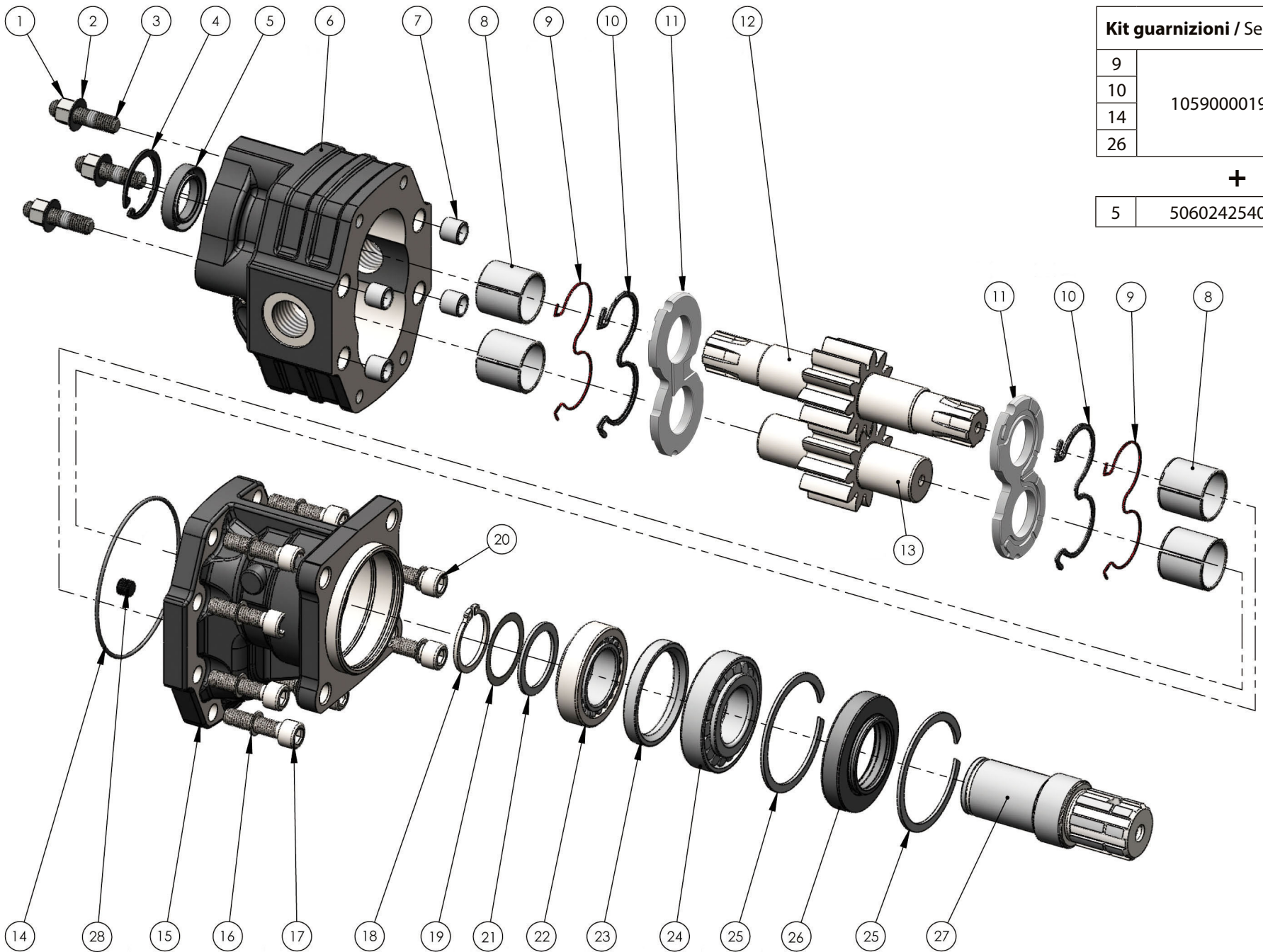
Fluido idraulico <i>Fluid</i>	Minerale o sintetico compatibile con guarnizioni: <i>Mineral or synthetic compatible with the following seals:</i> NBR, FKM, FPM, Nylon				
Viscosità cinematica consigliata <i>Kinematic viscosity suggested</i>	T media ambiente (°C) <i>Average ambient temp. (°C)</i>	< -10	-10÷10	10÷35	> 35
	VG (cSt = mm ² /s)	22	32	46	68
Viscosità cinematica ottimale di esercizio <i>Optimale kinematic viscosity</i>			VG= 10 cSt ÷ 100 cSt		
Viscosità cinematica max consentita all'avviamento <i>Max kinematic viscosity suggested at the start-up</i>			VG= 750 cSt		
Indice di viscosità consigliato <i>Viscosity index suggested</i>		VI > 100	Temperatura di esercizio <i>Working temperature</i>		
			-15°C +100°C		
Grado di filtrazione <i>Oil filtering</i>			> 200 bar: 10 µm < 200 bar: 25 µm		
Pressione di aspirazione <i>Inlet pressure</i>			-0,3 ÷ 2 bar		
Senso di rotazione <i>Pump rotation</i>			Unidirezionale <i>Unidirectional</i>		

Ingombro / Dimensions

Dati tecnici / Technical data

Tipo pompa <i>Pump type</i>	Rotazione <i>Rotation</i>		IN <i>ISO 228</i>	OUT <i>ISO 228</i>	A <i>mm</i>	B <i>mm</i>	Peso <i>Weight</i> <i>Kg</i>
	<i>Destra / Right</i>	<i>Sinistra / Left</i>					
NPH-17	10502310179	10502310188	G 1/2		180	119	10.6
NPH-22	10502310222	10502310231			183.5	121.5	11
NPH-27	10502310277	10502310286			186	124	11.5
NPH-34	10502310348	10502310357	G 3/4		191	124	12.5
NPH-43	10502310437	10502310446			197	130	13
NPH-51	10502310517	10502310526			202	130.5	13.5
NPH-61	10502310615	10502310624	G 1		208	136.5	14
NPH-73	10502310731	10502310740			216	135.5	14.5
NPH-82	10502310820	10502310839	G 1 1/4		221	142.5	14.9

PREDISPOSTA PER 2^A POMPA CON FLANGIA UNI
READY FOR 2ND PUMP WITH UNI FLANGE

Kit guarnizioni / Seal Kit	
9	10590000197
10	
14	
26	
+	
5	50602425401



N°	17	22	27	34	43	51	61	73	82	Codice/Code	Descrizione / Description	Q.		
1	50500400014	Dado M10 CH14 H10 Nut M10 CH14 H10	3		
2	50101800105	Rondella elastica Washer	3		
3	50300400198	Prigioniero M10x30 Stud bolt M10x30	3		
4	50100100373	Anello elastico Circlip	1		
5	50602425401	Guarnizione paraolio Oil seal	1		
6	.									51700900175	Corpo pompa Gear housing	1		
		.								51700900228				
			.							51700900273				
				.						51700900344				
					.					51700900433				
						.				51700900513				
							.			51700900611				
7	50100300282	Spine forate di centraggio 14x12,5 Pins 14x12,5	4		
8	53300400033	Boccola autolub. 28x32x30 Bushing 28x32x30	4		
9	50600001097	Guarnizione antiestrusione Back-up ring	2		
10	50600001088	Guarnizione per rasamento Thrust plate seal	2		
11	51001000293	Rasamento ad occhiale Thrust plate	2		
12	.									52302200176	Albero dentato conduttore Drive shaft	1		
		.								52302200229				
			.							52302200274				
				.						52302200345				
					.					52302200434				
						.				52302200514				
							.			52302200612				
13	.									52302200710	Albero dentato condotto Albero dentato condotto	1		
		.								52302200827				
			.							52302400174				
				.						52302400227				
					.					52302400272				
						.				52302400343				
							.			52302400432				
14	52302400512	Albero dentato condotto Albero dentato condotto	1		
15	52302400610				
16	52302400736				
17	52302400825				
18	50600001579			Guarnizione OR O-Ring	1
19	51800300116			Coperchio anteriore Mounting cover	1
20	50102000101			Rondella elastica Washer	8
17	50200400574	Vite TCE M10x40 Screw M10x40	8		
												4		
18	50100001355	Anello seeger Seeger ring	1		
19	52900700226	Rondella speciale 45x32x0,2 Special washer 45x35x0,2	1		
20	50200400565	Vite TCE M10x35 Screw M10x35	4		
21	52900700208	Rondella speciale 45x35x2 Special washer 45x35x2	1		
22	51000200202	Cuscinetto a rulli conici 35x62x18 Tapered roller bearing 35x62x18	1		
23	53000400164	Distanziale 52x64,2x8,25 Spacer 52x64,2x8,25	1		
24	51000200211	Cuscinetto a rulli conici 35x72x18,25 Tapered roller bearing 35x72x18,25	1		
25	50100002729	Anello elastico Circlip	2		
26	50600842723	Guarnizione paraolio Oil seal	1		
27	11400500147	Manicotto Coupling	1		
28	50401000063	Grano conico 1/8" Plug 1/8"	1		

CARATTERISTICHE TECNICHE DI FUNZIONAMENTO - TECHNICAL FEATURES

Tipo pompa Pump type	Cilindrata Displacement cm ³ /rev	Pressione Pressure			Velocità max. continua Max. continuous speed rpm	Velocità max. intermittente Max. intermittent speed rpm	Velocità min. Min. speed rpm
		P1	P2	P3			
		bar	bar	bar			
NPH-17	17.04	290	315	325	2500	3000	300
NPH-22	22.15						
NPH-27	26.18						
NPH-34	33.88	280	300	310	2200	2800	
NPH-43	43.12	270	290	300	2000	2500	
NPH-51	50.82	240	260	280			
NPH-61	60.06	220	240	250	1800	2000	
NPH-73	72.88	200	220	230	1600	1800	
NPH-82	81.08	190	210	220	1500		

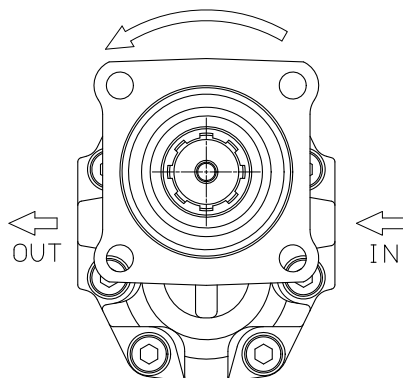
P1=Pressione max.continua
 P2=Pressione max. intermittente
 P3=Pressione max. di punta

Max. continuous pressure
 Max. Intermittent pressure
 Max. peak pressure

(100%)
 (20 sec.max.)
 (6 sec.max)

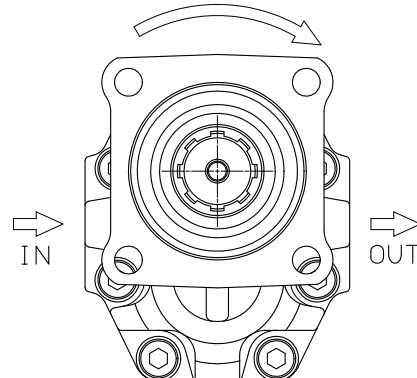
IDENTIFICAZIONE ASPIRAZIONE/MANDATA / SUCTION/DELIVERY IDENTIFICATION:

Rotazione antioraria, pompa sinistra
 Anti-clockwise rotation, left pump

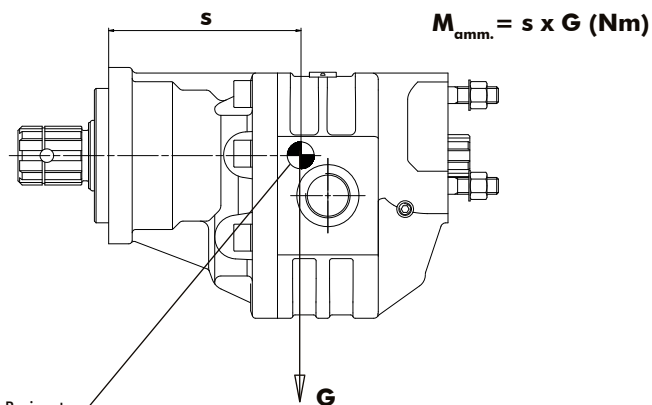


Vista FRONTALE
 FRONT

Rotazione oraria, pompa destra
 Clockwise rotation, right pump



Vista FRONTALE
 FRONT

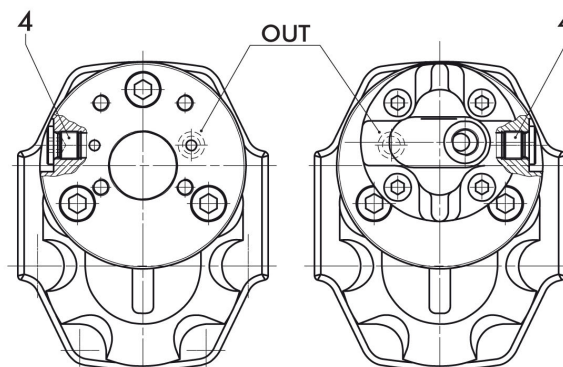
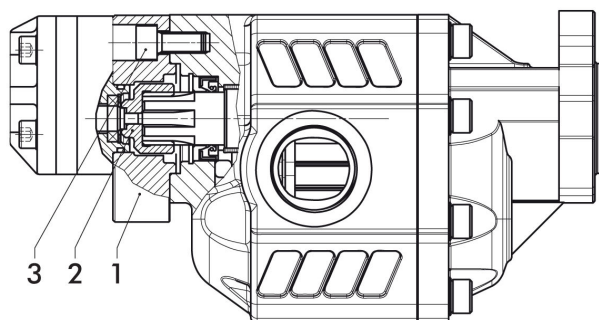
MOMENTO PESO / MASS MOMENT


G=Peso in N (Peso in Kg x 9.81)
 G=Weight in N (Weight in Kg x 9.81)

Tipo pompa - Pump type	S
NPH-17	92
NPH-22	94
NPH-27	98
NPH-34	100
NPH-43	103
NPH-51	105
NPH-61	108
NPH-73	112
NPH-82	115

PER MODIFICARE IL SENSO DI ROTAZIONE VEDERE ISTRUZ. 99700200060

TO CHANGE THE DIRECTION OF ROTATION SEE INSTRUCTION 99700200060

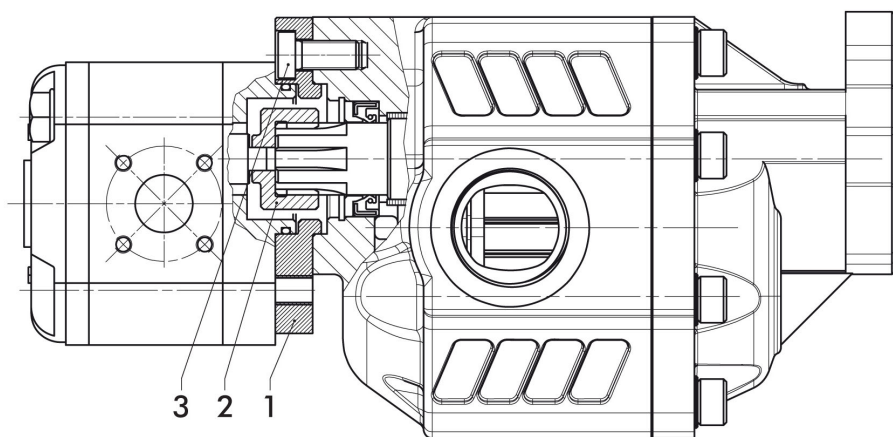
Pompe 1P
1P pumps

 Montaggio pompa 1P Dx
 Mounting pump 1P R

 Montaggio pompa 1P Sx
 Mounting pump 1P L

Kit montaggio codice: 10502000101
Mounting kit:
Coppia max.
Max. torque 21,5 Nm

Pos.	Codice Code	Descrizione Description	Q.
1	52800700817	Flangia per montaggio pompe 1P Destra/Sinistra Mounting flange for pumps 1P Left/Right	1
2	11400400853	Manicotto Coupling	1
3	50200400538	Vite TCE M10x22 UNI 5931 CL 12.9 Hex head screw M10x22 UNI 5931 CL 12.9	3
4	11500600117	Tappo TCE 1/4" DIN 908 Hex head plug 1/4" DIN 908	1

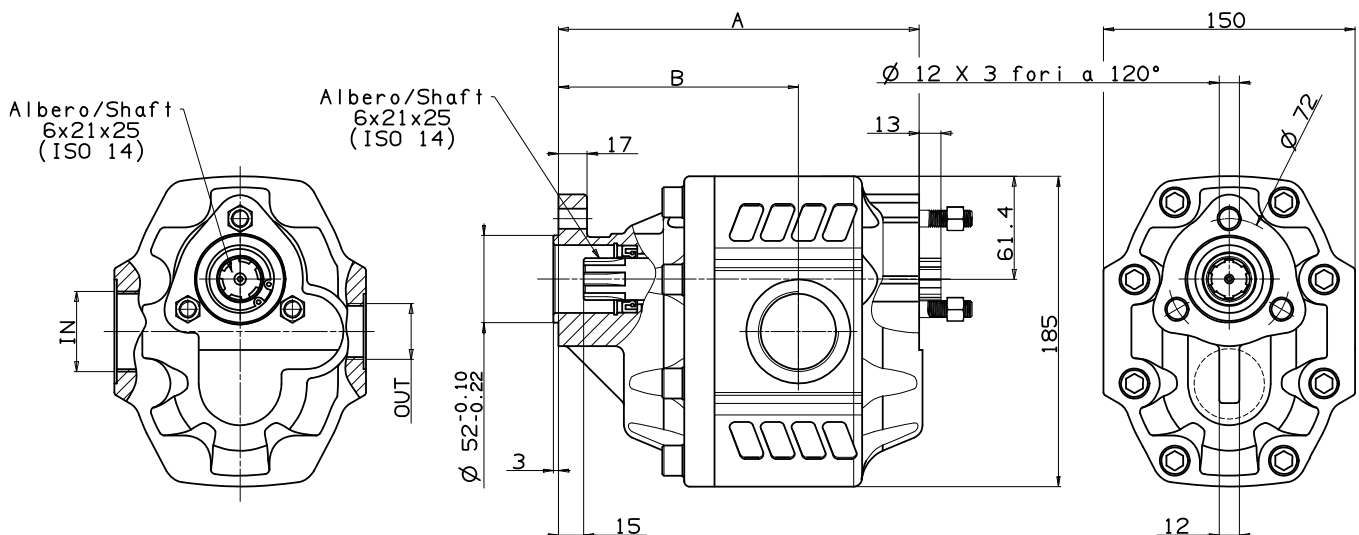
Pompe 2P
2P pumps

L'applicazione è da utilizzare solo con le pompe:
The assembly should be used only with the following pumps:
14920009433 4cc destra/right
14920009442 4cc sinistra/left
14920009451 6cc destra/right
14920009460 6cc sinistra/left

Kit montaggio codice: 10502000209
Mounting kit:
Coppia max.
Max. torque 70 Nm

Pos.	Codice Code	Descrizione Description	Q.tà Q.ty
1	52800700808	Flangia per montaggio pompe 2P Mounting flange for pumps 2P	1
2	11400400844	Manicotto Coupling	1
3	50200000149	Vite TCE M10x22 DIN 7984 CL 10.9 Hex head screw M10x22 DIN 7984 CL 10.9	3



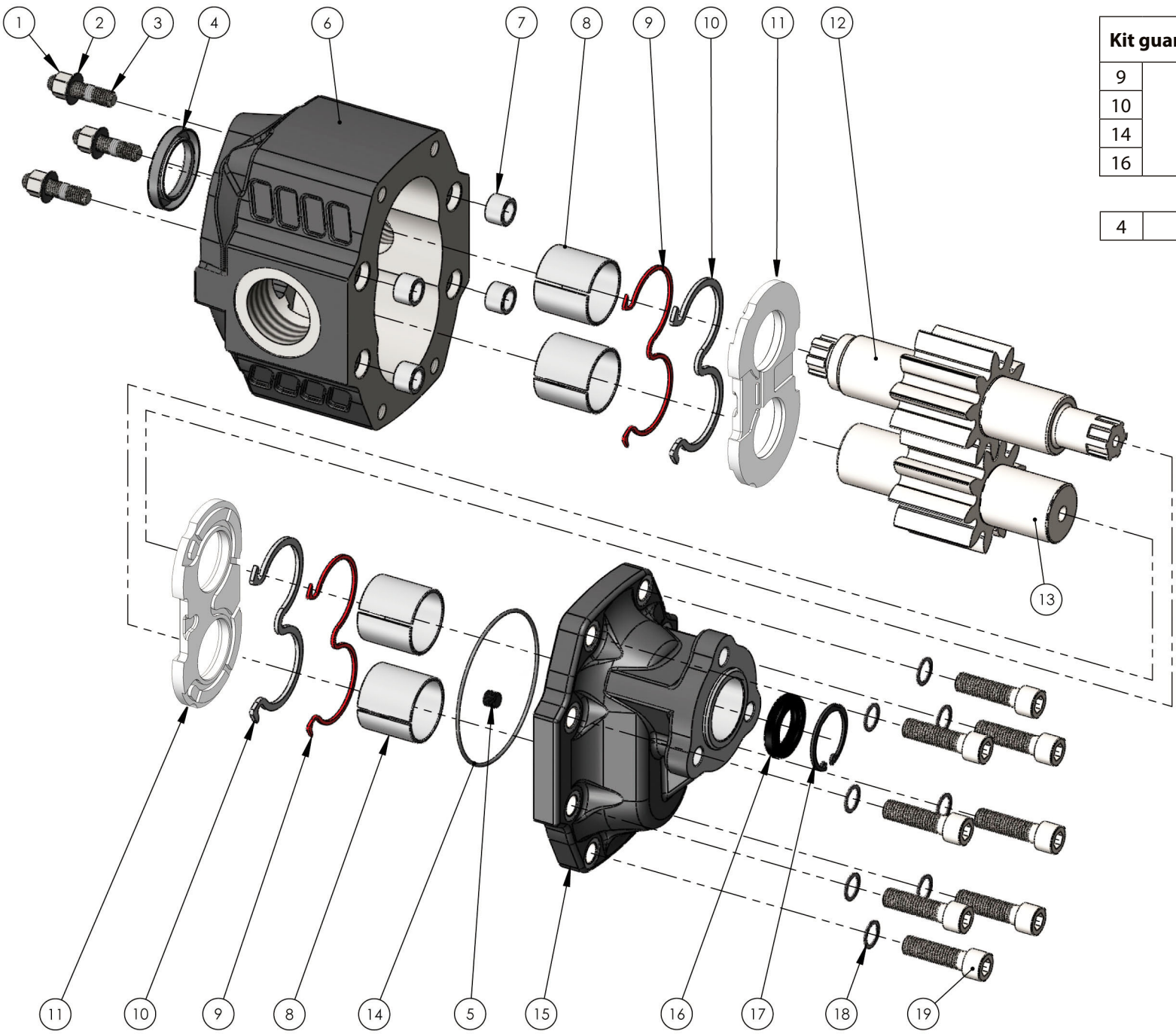
Fluido idraulico <i>Fluid</i>	Minerale o sintetico compatibile con guarnizioni: <i>Mineral or synthetic compatible with the following seals:</i> NBR, FKM, FPM, Nylon				
Viscosità cinematica consigliata <i>Kinematic viscosity suggested</i>	T media ambiente (°C) <i>Average ambient temp. (°C)</i>	< -10	-10÷10	10÷35	> 35
	VG (cSt = mm ² /s)	22	32	46	68
Viscosità cinematica ottimale di esercizio <i>Optimale kinematic viscosity</i>			VG= 10 cSt ÷ 100 cSt		
Viscosità cinematica max consentita all'avviamento <i>Max kinematic viscosity suggested at the start-up</i>			VG= 750 cSt		
Indice di viscosità consigliato <i>Viscosity index suggested</i>	VI > 100	Temperatura di esercizio <i>Working temperature</i> -15°C +100°C			
Grado di filtrazione <i>Oil filtering</i>			> 200 bar: 10 µm < 200 bar: 25 µm		
Pressione di aspirazione <i>Inlet pressure</i>			-0,3 ÷ 2 bar		
Senso di rotazione <i>Pump rotation</i>			Unidirezionale <i>Unidirectional</i>		

Ingombro / Dimensions

Dati tecnici / Technical data

Tipo pompa <i>Pump type</i>	Rotazione <i>Rotation</i>		IN	OUT	A	B	Peso <i>Weight</i>
	<i>Destra / Right</i>	<i>Sinistra / Left</i>					
NPGH-63	10502200636	10502200645	ISO 228	ISO 228	mm	mm	Kg
NPGH-73	10502200734	10502200743	G 1	G 3/4	184	121	17
NPGH-84	10502200841	10502200850	G 1 1/4	G 1	188	125	18
NPGH-100	10502201000	10502201019			192	125.5	18.5
NPGH-116	10502201162	10502201171			198	129	19
NPGH-133	10502201331	10502201340	G 1 1/2	G 1	204	135	19.5
NPGH-150	10502201500	10502201519			210	138	20.5
					215	143	21

PREDISPOSTA PER 2^A POMPA CON FLANGIA UNI
READY FOR 2ND PUMP WITH UNI FLANGE

Kit guarnizioni / Seal Kit	
9	10590000204
10	
14	
16	
+	
4	50602335527



N°	63	73	84	100	116	133	150	Codice/Code	Descrizione / Description		Q.
1	50500400014	Dado M10 CH14 H10	Nut M10 CH14 H10	3
2	50101800105	Rondella elastica	Washer	3
3	50300400198	Prigioniero M10x30	Stud bolt M10x30	3
4	50602335527	Guarnizione paraolio	Oil seal	1
5	50401000063	Grano conico 1/8"	Plug 1/8"	1
6	.							51702000635 Dx/Right	Corpo pompa	Gear housing	1
	.							51702010633 Sx/Left			
		.						51702000724 Dx/Right			
		.						51702010722 Sx/Left			
			.					51702000840 Dx/Right			
			.					51702010848 Sx/Left			
				.				51702001009 Dx/Right			
				.				51702011007 Sx/Left			
					.			51702001161 Dx/Right			
					.			51702011169 Sx/Left			
						.		51702001321 Dx/Right			
					.		51702011329 Sx/Left				
						.	51702001509 Dx/Right				
						.	51702011507 Sx/Left				
7	50100300291	Spine forate di centraggio 18x12.5	Pins 18x12.5	4
8	53300400088	Boccole autolub. 38x42x38	Bushing 38x42x38	4
9	50600001195	Guarnizione antiestrusione	Back-up ring	2
10	50600001186	Guarnizione per rasamento	Thrust plate seal	2
11	51001000328	Rasamento ad occhiale	Thrust plate	2
12	.							52302200630	Albero dentato conduttore	Drive shaft	1
		.						52302200729			
			.					52302200845			
				.				52302201004			
					.			52302201166			
						.		52302201326			
13	.							52302201504	Albero dentato condotto	Driven shaft	1
		.						52302000632			
			.					52302000721			
				.				52302000847			
					.			52302001006			
						.		52302001168			
						.	52302001328				
						.	52302001506				
14	50600001337	Guarnizione OR	O-ring	1
15	51800300143	Coperchio anteriore	Mounting cover	1
16	50602425401	Guarnizione paraolio	Oil seal	1
17	50100100373	Anello elastico	Circlip	1
18	50102000129	Rondella elastica	Washer	8
19	50200500573	Vite TCE M12x45	Screw M12x45	8

CARATTERISTICHE TECNICHE DI FUNZIONAMENTO - TECHNICAL FEATURES

Tipo pompa Pump type	Cilindrata Displacement cm ³ /rev	Pressione Pressure			Velocità max. continua Max. continuous speed rpm	Velocità max. intermittente Max. intermittent speed rpm	Velocità min. Min. speed rpm
		P1	P2	P3			
		bar	bar	bar			
NPGH-63	63.70	290	315	325	1800	2700	300
NPGH-73	74.87	280	300	315			
NPGH-84	85.96	260	280	290			
NPGH-100	102.60	250	270	280	1500	2500	300
NPGH-116	119.24	240	260	270			
NPGH-133	135.88	220	250	260			
NPGH-150	149.75	180	210	220			

P1=Pressione max.continua
P2=Pressione max. intermittente
P3=Pressione max. di punta

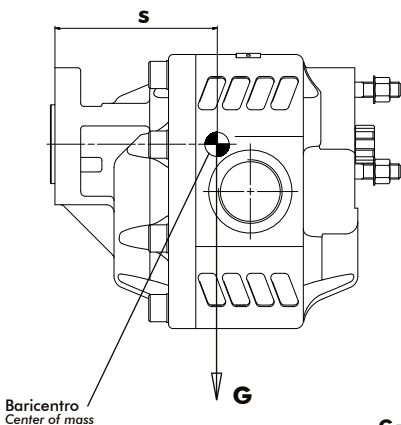
Max. continuous pressure
Max. Intermittent pressure
Max. peak pressure

(100%)
(20 sec.max.)
(6 sec.max)

IDENTIFICAZIONE ASPIRAZIONE/MANDATA / SUCTION/DELIVERY IDENTIFICATION:

Rotazione antioraria, pompa sinistra Anti-clockwise rotation, left pump	Rotazione oraria, pompa destra Clockwise rotation, right pump
<p>Vista FRONTALE FRONT</p>	<p>Vista FRONTALE FRONT</p>

MOMENTO PESO / MASS MOMENT

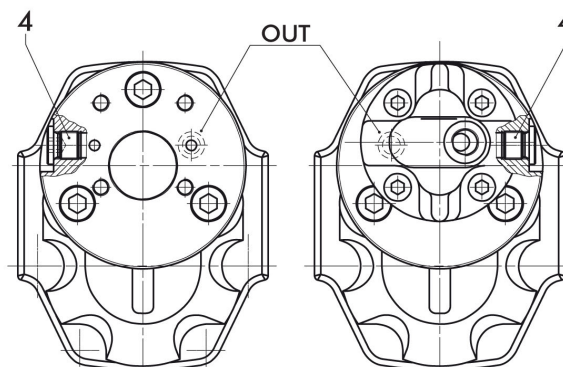
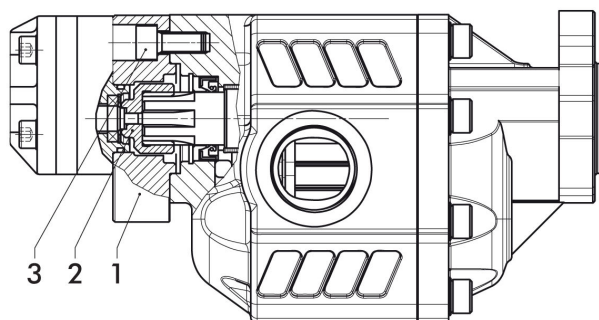


$M_{amm.} = s \times G \text{ (Nm)}$

Baricentro
Center of mass

G=Peso in N (Peso in Kg x 9.81)
G=Weight in N (Weight in Kg x 9.81)

Tipo pompa - Pump type	S
NPGH-63	111
NPGH-73	113
NPGH-84	115
NPGH-100	118
NPGH-116	122
NPGH-133	124
NPGH-150	127

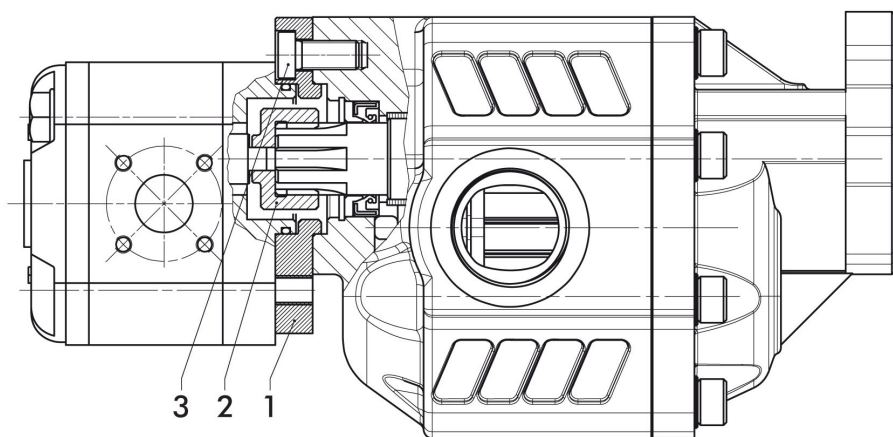
Pompe 1P
1P pumps

 Montaggio pompa 1P Dx
 Mounting pump 1P R

 Montaggio pompa 1P Sx
 Mounting pump 1P L

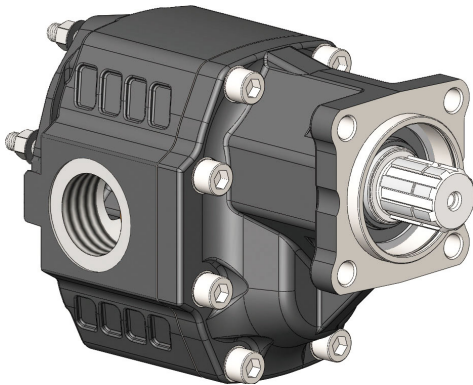
Kit montaggio codice: 10502000101
Mounting kit:
Coppia max.
Max. torque 21,5 Nm

Pos.	Codice Code	Descrizione Description	Q.
1	52800700817	Flangia per montaggio pompe 1P Destra/Sinistra Mounting flange for pumps 1P Left/Right	1
2	11400400853	Manicotto Coupling	1
3	50200400538	Vite TCE M10x22 UNI 5931 CL 12.9 Hex head screw M10x22 UNI 5931 CL 12.9	3
4	11500600117	Tappo TCE 1/4" DIN 908 Hex head plug 1/4" DIN 908	1

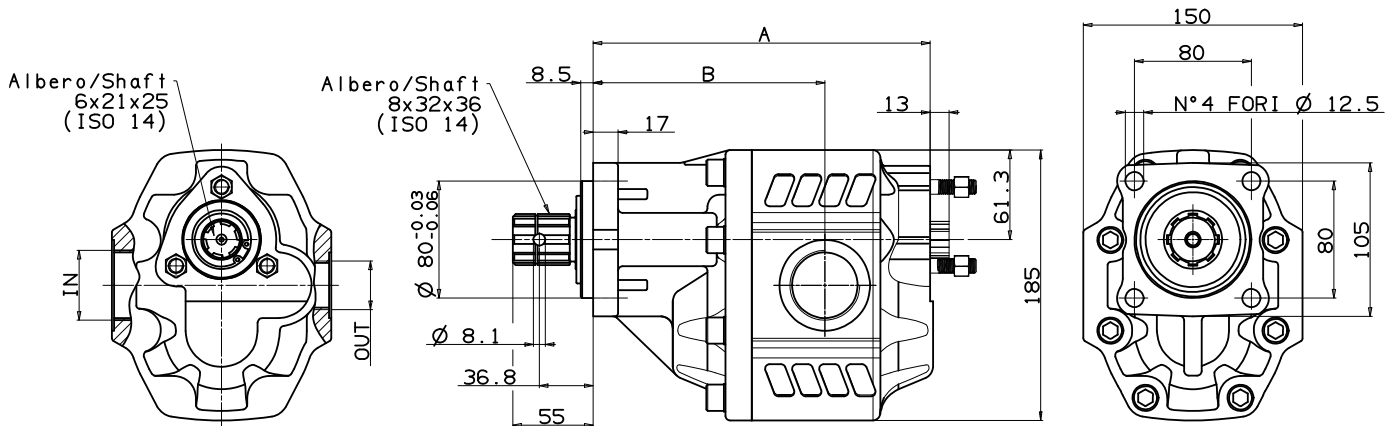
Pompe 2P
2P pumps

L'applicazione è da utilizzare solo con le pompe:
The assembly should be used only with the following pumps:
14920009433 4cc destra/right
14920009442 4cc sinistra/left
14920009451 6cc destra/right
14920009460 6cc sinistra/left

Kit montaggio codice: 10502000209
Mounting kit:
Coppia max.
Max. torque 70 Nm

Pos.	Codice Code	Descrizione Description	Q.tà Q.ty
1	52800700808	Flangia per montaggio pompe 2P Mounting flange for pumps 2P	1
2	11400400844	Manicotto Coupling	1
3	50200000149	Vite TCE M10x22 DIN 7984 CL 10.9 Hex head screw M10x22 DIN 7984 CL 10.9	3



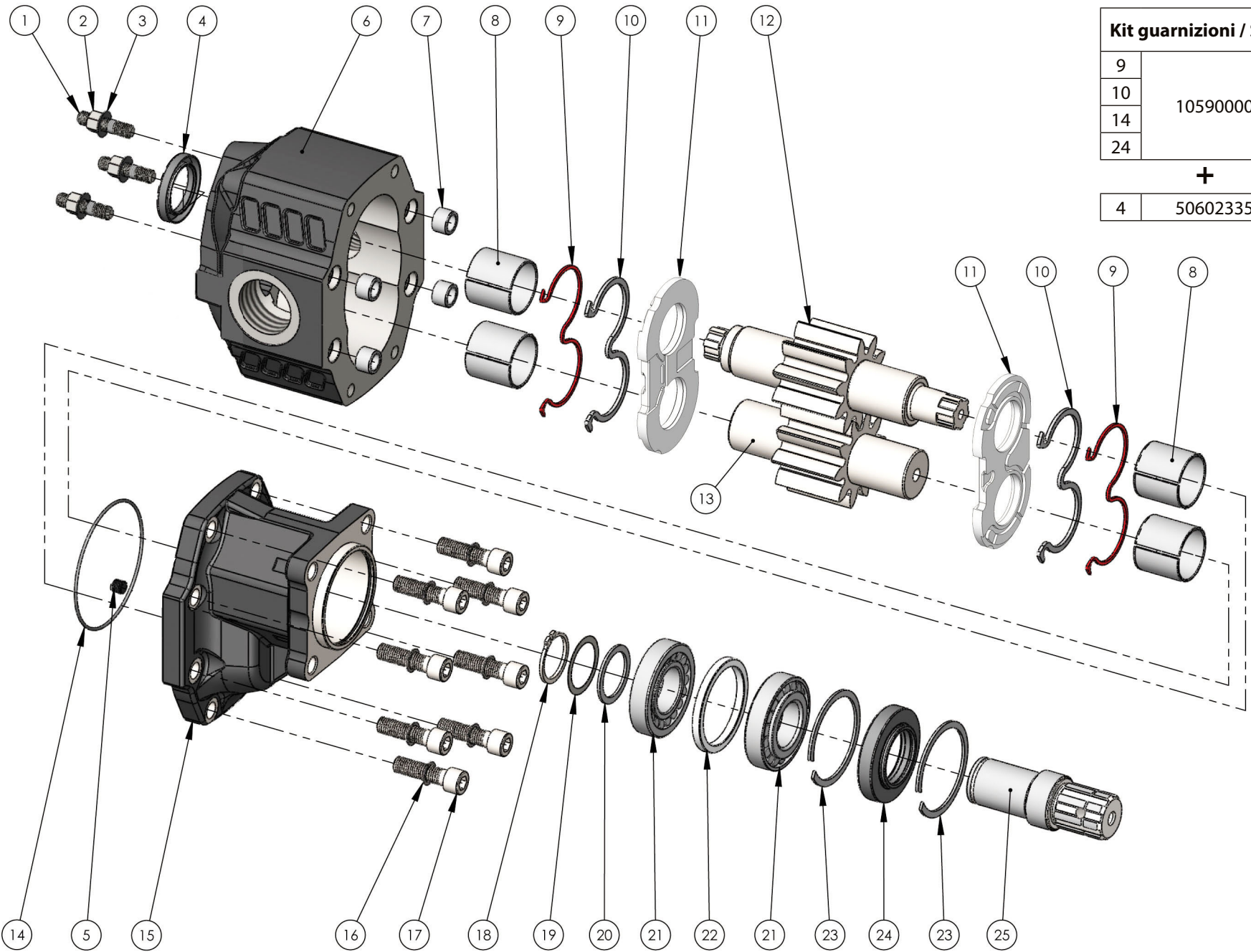
Fluido idraulico <i>Fluid</i>	Minerale o sintetico compatibile con guarnizioni: <i>Mineral or synthetic compatible with the following seals:</i> NBR, FKM, FPM, Nylon				
Viscosità cinematica consigliata <i>Kinematic viscosity suggested</i>	T media ambiente (°C) <i>Average ambient temp. (°C)</i>	< -10	-10÷10	10÷35	> 35
	VG (cSt = mm ² /s)	22	32	46	68
Viscosità cinematica ottimale di esercizio <i>Optimale kinematic viscosity</i>			VG= 10 cSt ÷ 100 cSt		
Viscosità cinematica max consentita all'avviamento <i>Max kinematic viscosity suggested at the start-up</i>			VG= 750 cSt		
Indice di viscosità consigliato <i>Viscosity index suggested</i>	VI > 100	Temperatura di esercizio <i>Working temperature</i> -15°C +100°C			
Grado di filtrazione <i>Oil filtering</i>			> 200 bar: 10 µm < 200 bar: 25 µm		
Pressione di aspirazione <i>Inlet pressure</i>			-0,3 ÷ 2 bar		
Senso di rotazione <i>Pump rotation</i>			Unidirezionale <i>Unidirectional</i>		

Ingombro / Dimensions

Dati tecnici / Technical data

Tipo pompa <i>Pump type</i>	Rotazione <i>Rotation</i>		IN	OUT	A	B	Peso <i>Weight</i>
	Destra / Right	Sinistra / Left					
NPGH-63	10502210634	10502210643	G 1	G 3/4	199.5	136.5	20.1
NPGH-73	10502210732	10502210741			203.5	140.5	20.7
NPGH-84	10502210849	10502210858	G 1 1/4	G 1	207.5	141	20.9
NPGH-100	10502211008	10502211017			213.5	144.5	21.5
NPGH-116	10502211160	10502211179			219.5	150.5	22
NPGH-133	10502211339	10502211348	G 1 1/2		225.5	153.5	22.8
NPGH-150	10502211508	10502211517			230.5	158.8	24.1

PREDISPOSTA PER 2^A POMPA CON FLANGIA UNI
READY FOR 2ND PUMP WITH UNI FLANGE

Kit guarnizioni / Seal Kit	
9	10590000213
10	
14	
24	
+	
4	5060233527



N°	63	73	84	100	116	133	150	Codice/Code	Descrizione / Description	Q.
1	50300400198	Dado M10 CH14 H10 Nut M10 CH14 H10	3
2	50500400014	Rondella elastica Washer	3
3	50101800105	Prigioniero M10x30 Stud bolt M10x30	3
4	50602335527	Guarnizione paraolio Oil seal	1
5	50401000063	Grano conico 1/8" Plug 1/8"	1
6	.							51702000635 Dx/Right	Corpo pompa Gear housing	1
	.							51702010633 Sx/Left		
		.						51702000724 Dx/Right		
		.						51702010722 Sx/Left		
			.					51702000840 Dx/Right		
			.					51702010848 Sx/Left		
				.				51702001009 Dx/Right		
				.				51702011007 Sx/Left		
					.			51702001161 Dx/Right		
					.			51702011169 Sx/Left		
					.		51702001321 Dx/Right			
					.		51702011329 Sx/Left			
						.	51702001509 Dx/Right			
						.	51702011507 Sx/Left			
7	50100300291	Spine forate di centraggio 18x12.5 Pins 18x12.5	4
8	53300400088	Boccole autolub. 38x42x38 Bushing 38x42x38	4
9	50600001195	Guarnizione antiestrusione Back-up ring	2
10	50600001186	Guarnizione per rasamento Thrust plate seal	2
11	51001000328	Rasamento ad occhiale Thrust plate	2
12	.							52302200630	Albero dentato conduttore Drive shaft	1
		.						52302200729		
			.					52302200845		
				.				52302201004		
					.			52302201166		
						.		52302201326		
13	.							52302201504	Albero dentato condotto Driven shaft	1
		.						52302000632		
			.					52302000721		
				.				52302000847		
					.			52302001006		
						.		52302001168		
						.	52302001328			
						.	52302001506			
14	50600001337	Guarnizione OR O-Ring	1
15	51800300161	Coperchio anteriore Mounting cover	1
16	50102000129	Rondella elastica Washer	8
17	50200500573	Vite TCE M12x45 Screw M12x45	8
18	50100001355	Anello seeger Seeger ring	1
19	52900700226	Rondella speciale 45x30x0,2 Special washer 45x30x0,2	1
20	52900700208	Rondella speciale 45x35x2 Special washer 45x35x2	1
21	51000200211	Cuscinetto rulli conici 35x72x18,25 Tapered roller bearing 35x72x18,25	2
22	53000100783	Distanziale 60x72x6,75 Spacer 60x72x6,75	1
23	50100002729	Anello elastico Circlip	2
24	50600842723	Guarnizione paraolio Oil seal	1
25	11400500147	Manicotto Coupling	1

CARATTERISTICHE TECNICHE DI FUNZIONAMENTO - TECHNICAL FEATURES

Tipo pompa Pump type	Cilindrata Displacement cm ³ /rev	Pressione Pressure P1 P2 P3			Velocità max. continua Max. continuous speed rpm	Velocità max. intermittente Max. intermittent speed rpm	Velocità min. Min. speed rpm
		bar	bar	bar			
NPGH-63	63.70	290	315	325	1800	2700	300
NPGH-73	74.87	280	300	315			
NPGH-84	85.96	260	280	290			
NPGH-100	102.60	250	270	280			
NPGH-116	119.24	240	260	270	1500	2500	300
NPGH-133	135.88	220	250	260			
NPGH-150	149.75	180	210	220			

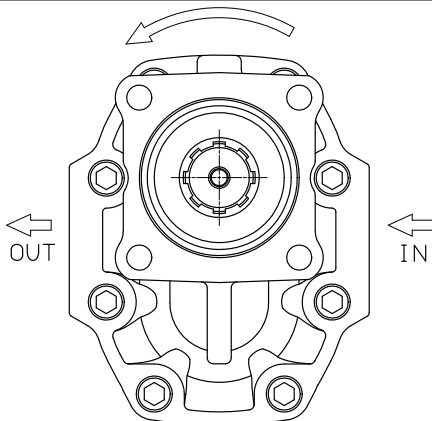
P1=Pressione max.continua
P2=Pressione max. intermittente
P3=Pressione max. di punta

Max. continuous pressure
Max. Intermittent pressure
Max. peak pressure

(100%)
(20 sec.max.)
(6 sec.max)

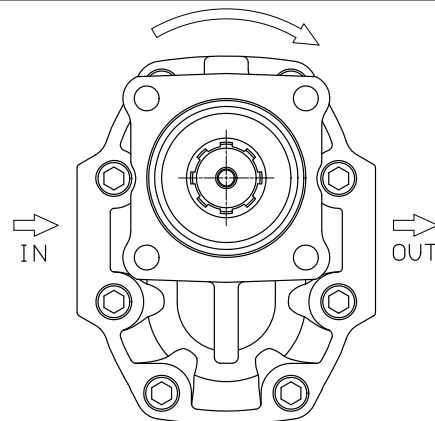
IDENTIFICAZIONE ASPIRAZIONE/MANDATA / SUCTION/DELIVERY IDENTIFICATION:

Rotazione antioraria, pompa sinistra
Anti-clockwise rotation, left pump



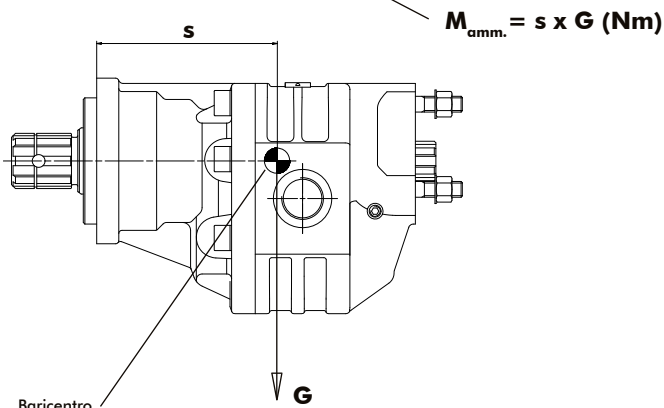
Vista FRONTALE
FRONT

Rotazione oraria, pompa destra
Clockwise rotation, right pump



Vista FRONTALE
FRONT

MOMENTO PESO / MASS MOMENT

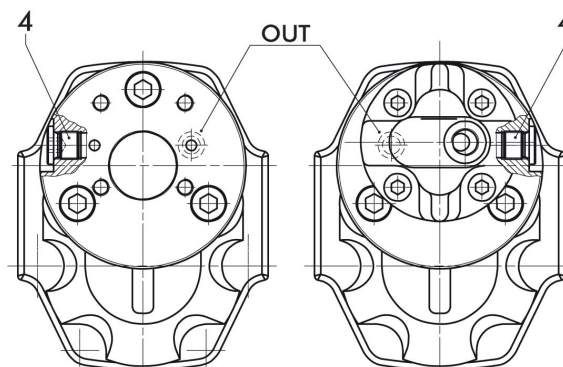
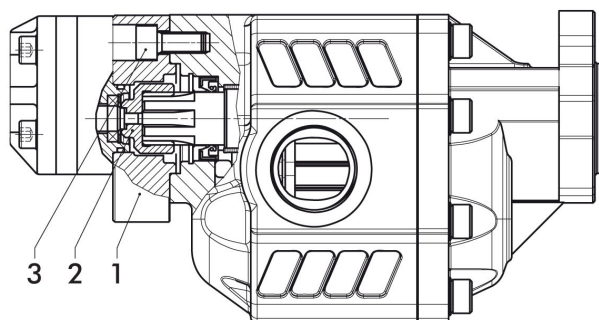


Baricentro
Center of mass

G=Peso in N (Peso in Kg x 9.81)
G=Weight in N (Weight in Kg x 9.81)

Tipo pompa - Pump type	S
NPGH-63	111
NPGH-73	114
NPGH-84	117
NPGH-100	121
NPGH-116	124
NPGH-133	128
NPGH-150	132

LA POMPA E' MUNITA DI PARAOLIO BIDIREZIONALE E DI CUSCINETTI A RULLI CONICI SULL'ALBERO DI USCITA
THE PUMP IS COMPLETE WITH DOUBLE OIL-SEAL AND TAPERED ROLLER BEARING ON THE OUTPUT SHAFT

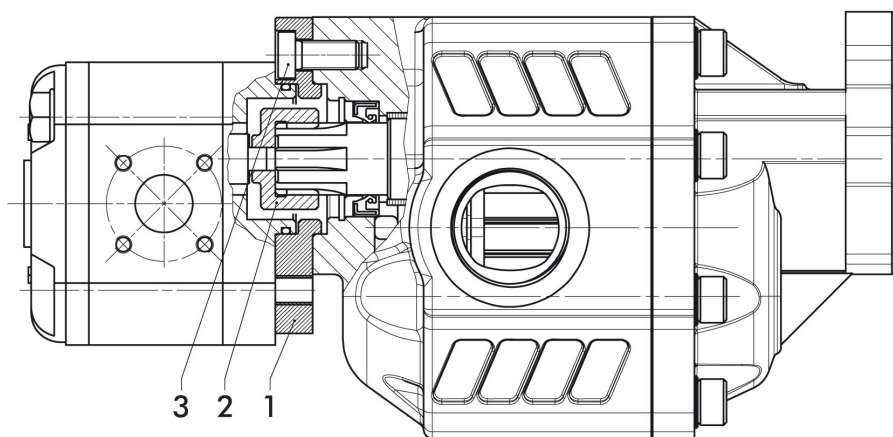
Pompe 1P
1P pumps

 Montaggio pompa 1P Dx
 Mounting pump 1P R

 Montaggio pompa 1P Sx
 Mounting pump 1P L

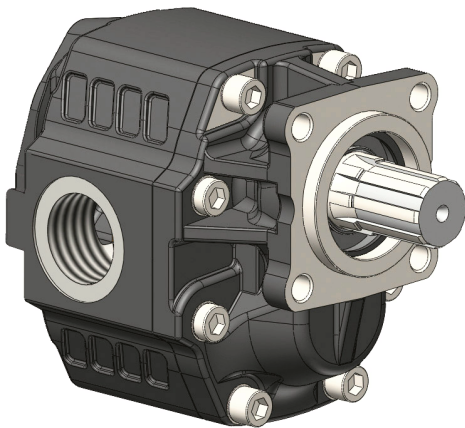
Kit montaggio codice: 10502000101
Mounting kit:
Coppia max.
Max. torque 21,5 Nm

Pos.	Codice Code	Descrizione Description	Q.
1	52800700817	Flangia per montaggio pompe 1P Destra/Sinistra Mounting flange for pumps 1P Left/Right	1
2	11400400853	Manicotto Coupling	1
3	50200400538	Vite TCE M10x22 UNI 5931 CL 12.9 Hex head screw M10x22 UNI 5931 CL 12.9	3
4	11500600117	Tappo TCE 1/4" DIN 908 Hex head plug 1/4" DIN 908	1

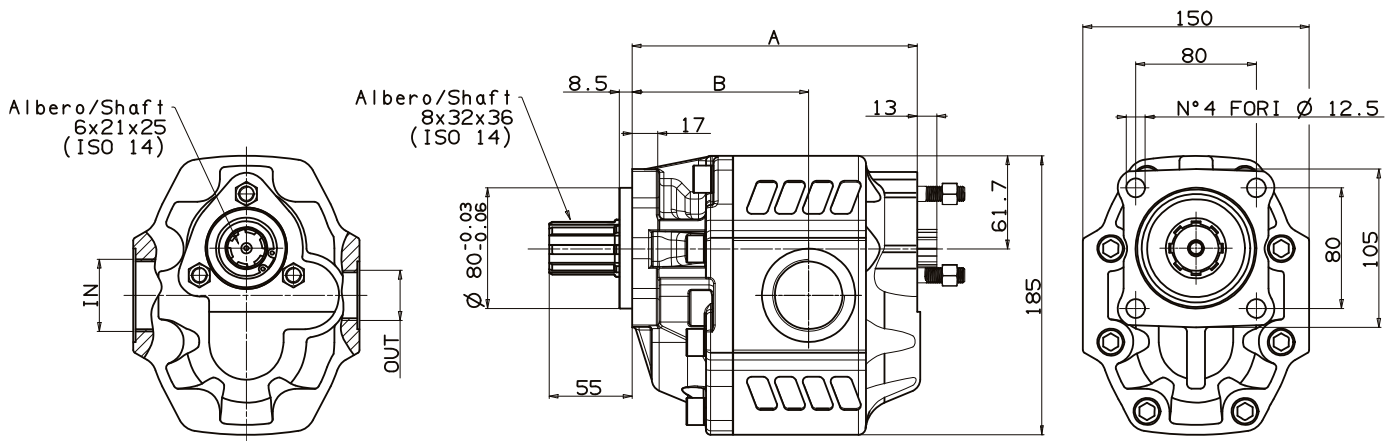
Pompe 2P
2P pumps

L'applicazione è da utilizzare solo con le pompe:
The assembly should be used only with the following pumps:
14920009433 4cc destra/right
14920009442 4cc sinistra/left
14920009451 6cc destra/right
14920009460 6cc sinistra/left

Kit montaggio codice: 10502000209
Mounting kit:
Coppia max.
Max. torque 70 Nm

Pos.	Codice Code	Descrizione Description	Q.tà Q.ty
1	52800700808	Flangia per montaggio pompe 2P Mounting flange for pumps 2P	1
2	11400400844	Manicotto Coupling	1
3	50200000149	Vite TCE M10x22 DIN 7984 CL 10.9 Hex head screw M10x22 DIN 7984 CL 10.9	3



Fluido idraulico <i>Fluid</i>	Minerale o sintetico compatibile con guarnizioni: <i>Mineral or synthetic compatible with the following seals:</i> NBR, FKM, FPM, Nylon				
Viscosità cinematica consigliata <i>Kinematic viscosity suggested</i>	T media ambiente (°C) <i>Average ambient temp. (°C)</i>	< -10	-10÷10	10÷35	> 35
	VG (cSt = mm ² /s)	22	32	46	68
Viscosità cinematica ottimale di esercizio <i>Optimale kinematic viscosity</i>			VG= 10 cSt ÷ 100 cSt		
Viscosità cinematica max consentita all'avviamento <i>Max kinematic viscosity suggested at the start-up</i>			VG= 750 cSt		
Indice di viscosità consigliato <i>Viscosity index suggested</i>		VI > 100	Temperatura di esercizio <i>Working temperature</i>		
			-15°C +100°C		
Grado di filtrazione <i>Oil filtering</i>			> 200 bar: 10 µm < 200 bar: 25 µm		
Pressione di aspirazione <i>Inlet pressure</i>			-0,3 ÷ 2 bar		
Senso di rotazione <i>Pump rotation</i>			Unidirezionale <i>Unidirectional</i>		

Ingombro / Dimensions

Dati tecnici / Technical data

Tipo pompa <i>Pump type</i>	Rotazione <i>Rotation</i>		IN	OUT	A	B	Peso <i>Weight</i>
	<i>Destra / Right</i>	<i>Sinistra / Left</i>					
NPGH-63	10507000638	10507000647	ISO 228	ISO 228	mm	mm	Kg
NPGH-73	10507000736	10507000745	G 1	G 3/4	158	95	18
NPGH-84	10507000843	10507000852			162	99	18.1
NPGH-100	10507001002	10507001011	G 1 1/4	G 1	166	99.5	18.8
NPGH-116	10507001164	10507001173			172	103	19.5
NPGH-133	10507001333	10507001342	G 1 1/2		178	109	20.1
NPGH-150	10507001502	10507001511			184	112	21
					189	117	21.5

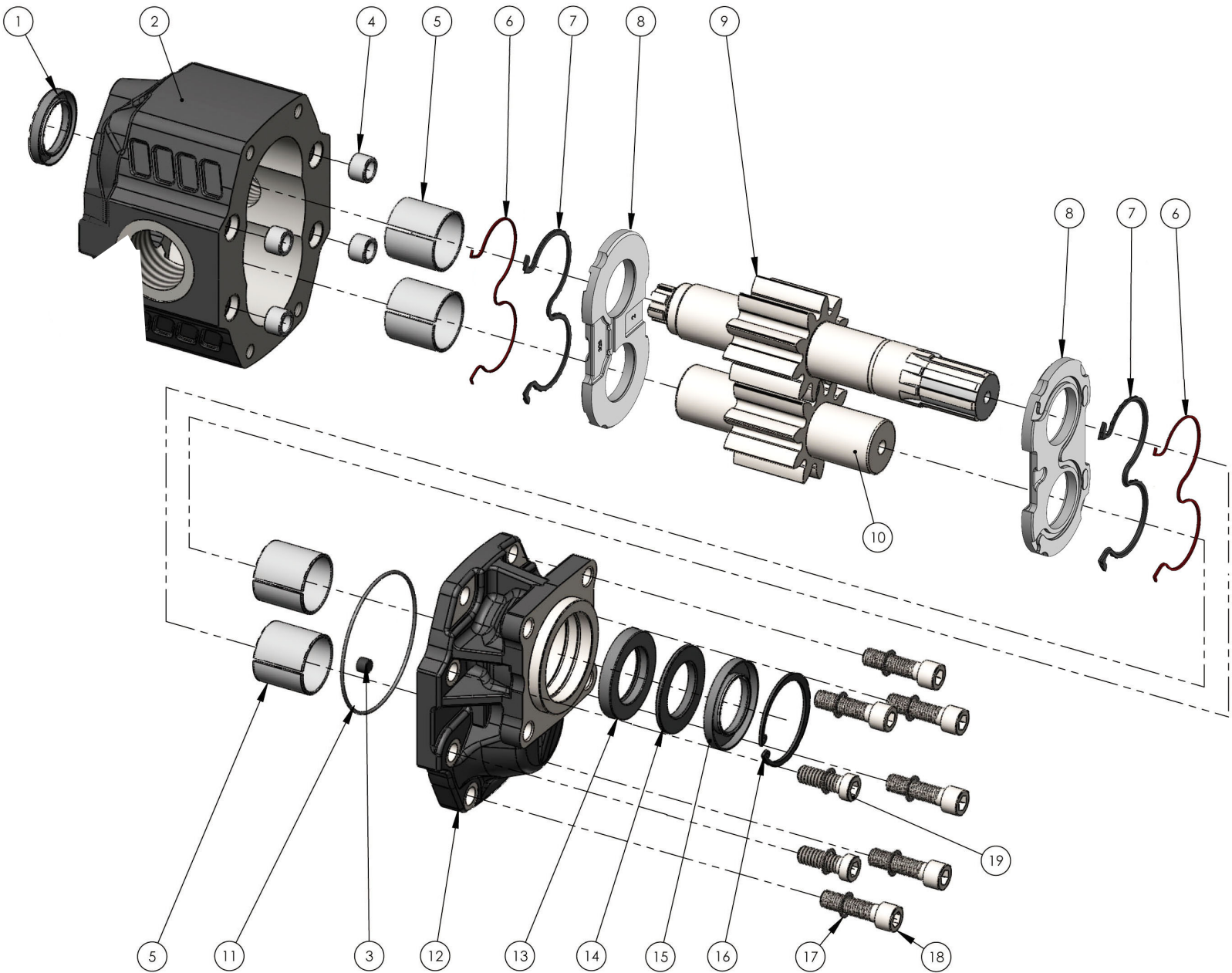

POMPE DA NON UTILIZZARE CON CARICHI ASSIALI E RADIALI SULL'ALBERO
NO AXIAL AND RADIAL LOADS ALLOWED ON PUMP SHAFT
PREDISPOSTA PER 2^A POMPA CON FLANGIA UNI
READY FOR 2ND PUMP WITH UNI FLANGE

Kit guarnizioni / Seal Kit

6	10590000302
7	
11	
13	
14	
15	

+

1	50602335527
---	-------------



N°	63	73	84	100	116	133	150	Codice/Code	Descrizione / Description		Q.
1	50602335527	Guarnizione paraolio	Oil seal	1
2	.							51702000635 Dx/Right	Corpo pompa	Gear housing	1
	.							51702010633 Sx/Left			
		.						51702000724 Dx/Right			
		.						51702010722 Sx/Left			
			.					51702000840 Dx/Right			
			.					51702010848 Sx/Left			
				.				51702001009 Dx/Right			
				.				51702011007 Sx/Left			
					.			51702001161 Dx/Right			
					.			51702011169 Sx/Left			
						.		51702001321 Dx/Right			
						.		51702011329 Sx/Left			
						.	51702001509 Dx/Right				
						.	51702011507 Sx/Left				
3	50401000063	Grano conico 1/8"	Plug 1/8"	1
4	50100300291	Spine forate di centraggio 18x12.5	Bushing 18x12.5	4
5	53300400088	Boccole autolub. 38x42x38	Bushing 38x42x38	4
6	50600001195	Guarnizione antiestrusione	Back-up ring	2
7	50600001186	Guarnizione per rasamento	Thrust plate seal	2
8	51001000328	Rasamento ad occhiale	Thrust plate	2
9	.							52302900633	Albero dentato conduttore	Drive shaft	1
		.						52302900722			
			.					52302900848			
				.				52302901007			
					.			52302901169			
						.		52302901329			
10	.							52302000632	Albero dentato condotto	Driven shaft	1
		.						52302000721			
			.					52302000847			
				.				52302001006			
					.			52302001168			
						.		52302001328			
						.	52302001506				
11	50600001337	Guarnizione OR	O-Ring	1
12	51800300216	Coperchio anteriore	Mounting cover	1
13	50602138624	Guarnizione paraolio	Oil seal	1
14	50602238623	Anello schermo paraolio	Oil seal guard ring	1
15	50600738627	Guarnizione paraolio	Oil seal	1
16	50100100588	Anello seeger	Seeger ring	1
17	50102000129	Rondella elastica	Washer	8
18	.							50200500573	Vite TCE M12x45	Screw M12x45	6
					8
19	.							50200000265	Vite TCE M12x35	Screw M12x35	2

CARATTERISTICHE TECNICHE DI FUNZIONAMENTO - TECHNICAL FEATURES

Tipo pompa Pump type	Cilindrata Displacement cm ³ /rev	Pressione Pressure			Velocità max. continua Max. continuous speed rpm	Velocità max. intermittente Max. intermittent speed rpm	Velocità min. Min. speed rpm
		P1	P2	P3			
		bar	bar	bar			
NPGH-63	63.70	290	315	325	1800	2700	300
NPGH-73	74.87	280	300	315			
NPGH-84	85.96	260	280	290			
NPGH-100	102.60	250	270	280			
NPGH-116	119.24	240	260	270	1500	2500	300
NPGH-133	135.88	220	250	260			
NPGH-150	149.75	180	210	220			

P1=Pressione max.continua
 P2=Pressione max. intermittente
 P3=Pressione max. di punta

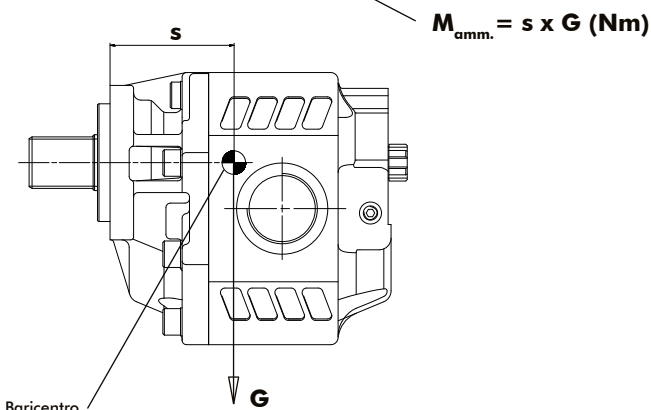
Max. continuous pressure
 Max. Intermittent pressure
 Max. peak pressure

(100%)
 (20 sec.max.)
 (6 sec.max)

IDENTIFICAZIONE ASPIRAZIONE/MANDATA / SUCTION/DELIVERY IDENTIFICATION:

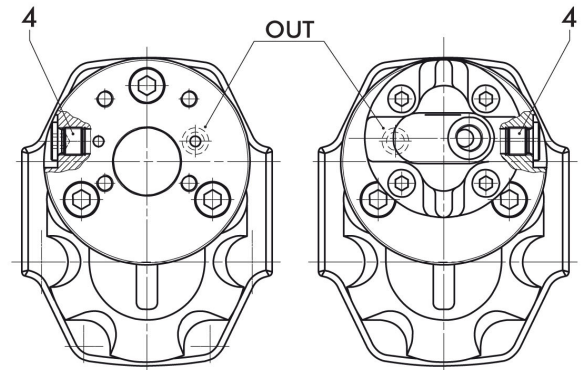
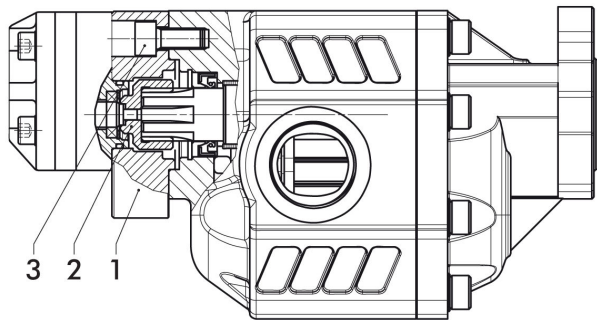
Rotazione antioraria, pompa sinistra Anti-clockwise rotation, left pump	Rotazione oraria, pompa destra Clockwise rotation, right pump
<p>Vista FRONTALE FRONT</p>	<p>Vista FRONTALE FRONT</p>

MOMENTO PESO / MASS MOMENT



G=Peso in N (Peso in Kg x 9.81)
 G=Weight in N (Weight in Kg x 9.81)

Tipo pompa - Pump type	S
NPGH-63	84
NPGH-73	86
NPGH-84	89
NPGH-100	91
NPGH-116	94
NPGH-133	97
NPGH-150	100

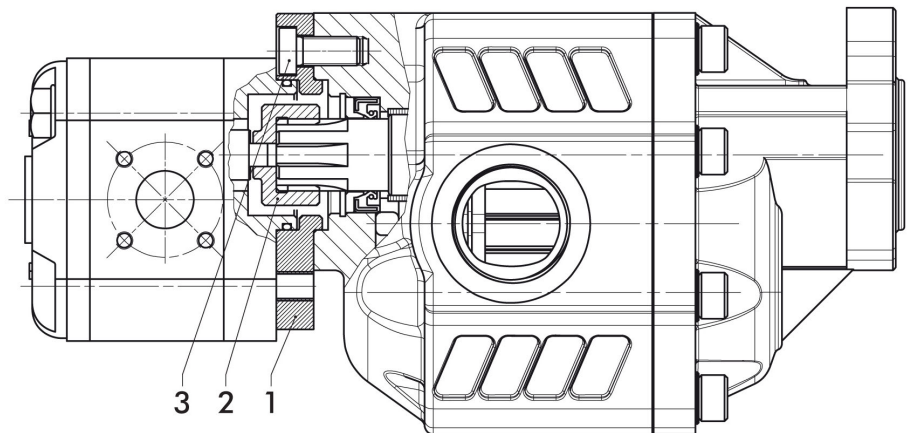
Pompe 1P
1P pumps

 Montaggio pompa 1P Dx
 Mounting pump 1P R

 Montaggio pompa 1P Sx
 Mounting pump 1P L

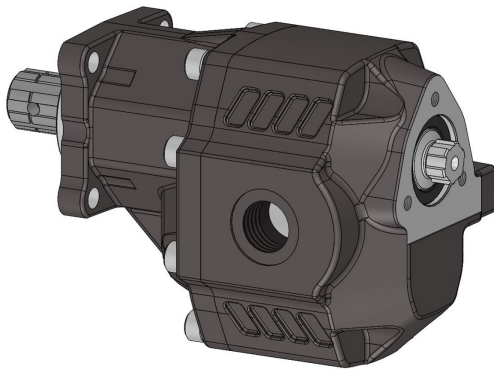
Kit montaggio codice: 10502000101
Mounting kit:
Coppia max.
Max. torque 21,5 Nm

Pos.	Codice Code	Descrizione Description	Q.
1	52800700817	Flangia per montaggio pompe 1P Destra/Sinistra Mounting flange for pumps 1P Left/Right	1
2	11400400853	Manicotto Coupling	1
3	50200400538	Vite TCE M10x22 UNI 5931 CL 12.9 Hex head screw M10x22 UNI 5931 CL 12.9	3
4	11500600117	Tappo TCE 1/4" DIN 908 Hex head plug 1/4" DIN 908	1

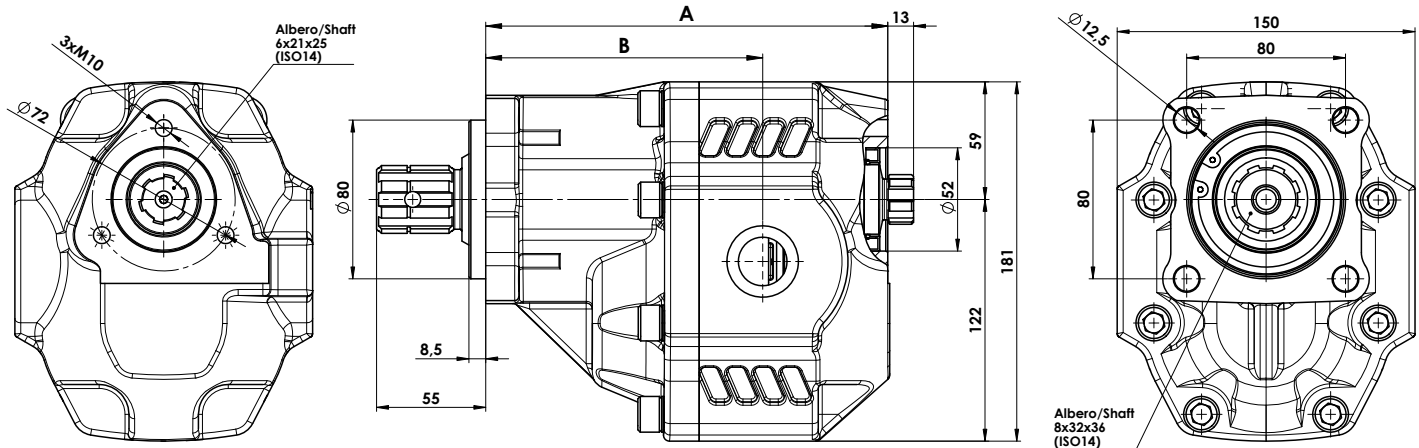
Pompe 2P
2P pumps

L'applicazione è da utilizzare solo con le pompe:
The assembly should be used only with the following pumps:
14920009433 4cc destra/right
14920009442 4cc sinistra/left
14920009451 6cc destra/right
14920009460 6cc sinistra/left

Kit montaggio codice: 10502000209
Mounting kit:
Coppia max.
Max. torque 70 Nm

Pos.	Codice Code	Descrizione Description	Q.tà Q.ty
1	52800700808	Flangia per montaggio pompe 2P Mounting flange for pumps 2P	1
2	11400400844	Manicotto Coupling	1
3	50200000149	Vite TCE M10x22 DIN 7984 CL 10.9 Hex head screw M10x22 DIN 7984 CL 10.9	3


HEAVY DUTY APPLICATIONS

Fluido idraulico <i>Fluid</i>	Minerale o sintetico compatibile con guarnizioni: <i>Mineral or synthetic compatible with the following seals:</i> NBR, FKM, FPM, Nylon				
Viscosità cinematica consigliata <i>Kinematic viscosity suggested</i>	T media ambiente (°C) <i>Average ambient temp. (°C)</i>	< -10	-10÷10	10÷35	> 35
	VG (cSt = mm ² /s)	22	32	46	68
Viscosità cinematica ottimale di esercizio <i>Optimale kinematic viscosity</i>			VG= 10 cSt ÷ 100 cSt		
Viscosità cinematica max consentita all'avviamento <i>Max kinematic viscosity suggested at the start-up</i>			VG= 750 cSt		
Indice di viscosità consigliato <i>Viscosity index suggested</i>		VI > 100	Temperatura di esercizio <i>Working temperature</i>		
			-15°C +100°C		
Grado di filtrazione <i>Oil filtering</i>			> 200 bar: 10 µm < 200 bar: 25 µm		
Pressione di aspirazione <i>Inlet pressure</i>			-0,3 ÷ 2 bar		
Senso di rotazione <i>Pump rotation</i>			Unidirezionale <i>Unidirectional</i>		

Ingombro / Dimensions

Dati tecnici / Technical data

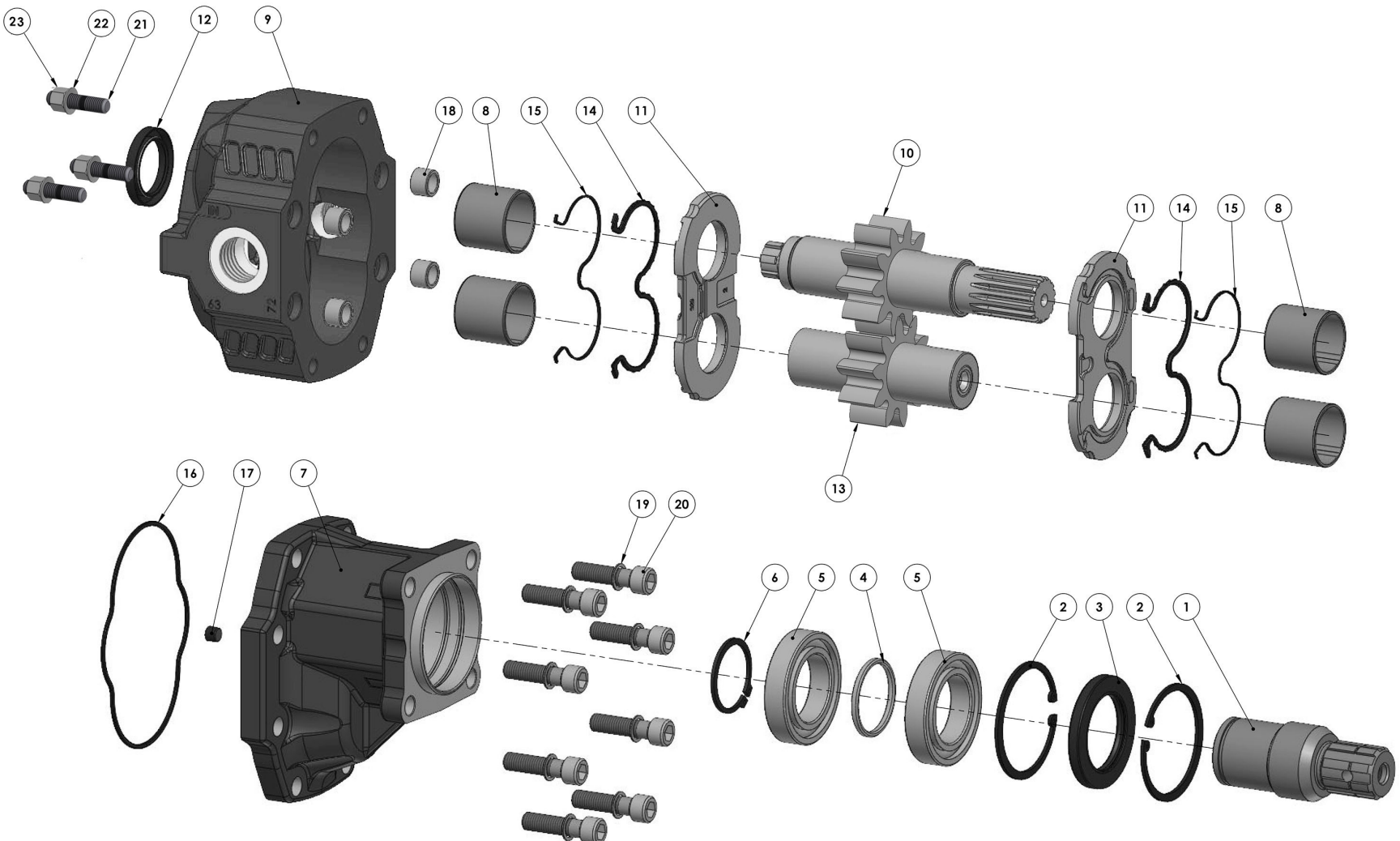
Tipo pompa <i>Pump type</i>	Cilindrata <i>Displacement</i>	Codice <i>Code</i>		IN <i>ISO 228</i>	OUT <i>ISO 228</i>	Pressione <i>Pressure</i>			A <i>mm</i>	B <i>mm</i>	Velocità max. continua <i>Max. continuous speed</i>	Velocità max. intermitt. <i>Max. intermittent speed</i>	Velocità min. <i>Min. speed</i>	Peso <i>Weight</i>
						P1	P2	P3						
						bar	bar	bar						
NPGH-73	74.87	10592900738	10592900747	G 1	G 3/4	280	300	315	202.5	139.5	1800	2700	300	17
NPGH-84	85.96	10592900845	10592900854	G 1-1/4	G 1	260	280	290	206.5	140				17.5
NPGH-100	102.60	10592901004	10592901013			250	270	280	212.5	143.5	18			
NPGH-116	119.24	10592901166	10592901175			240	260	270	218.5	149.5	1500	18.5		

P1=Pressione max.continua
P2=Pressione max. intermittente
P3=Pressione max. di punta

Max. continuous pressure
Max. Intermittent pressure
Max. peak pressure

(100%)
(20 sec.max.)
(6 sec.max.)

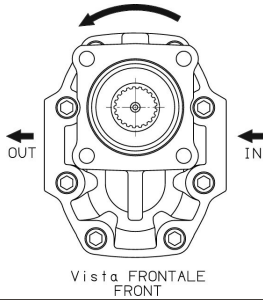
Esploso ricambi / Spare parts



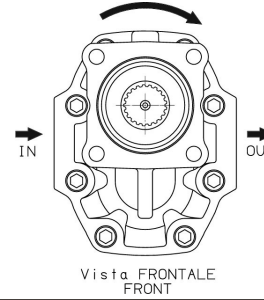
N°	73	84	100	116	Codice/Code	Descrizione / Description		Q.
1	11400500147	Manicotto	Coupling	1
2	50100100695	Anello seeger 75l	Seeger ring l 75	2
3	50602350751	Guarnizione paraolio AS 50x75x8	Oil seal AS 50x75x8	1
4	53000100498	Distanziale 16,2x20x6,8	Spacer 16,2x20x6,8	1
5	51000145755	Cuscinetto a sfere 45x75x16	Ball bearing 45x75x16	2
6	50100001453	Anello elastico	Circlip	1
7	51800300681	Coperchio anteriore	Mounting cover	1
8	53300400088	Boccole autolub. 38x42x38	Bushing 38x42x38	4
9	.				51702000724 Dx/Right	Corpo pompa	Gear housing	1
	.				51702010722 Sx/Left			
		.			51702000840 Dx/Right			
		.			51702010848 Sx/Left			
			.		51702001009 Dx/Right			
			.		51702011007 Sx/Left			
				.	51702001161 Dx/Right			
10	.				52304500722	Albero dentato conduttore	Drive shaft	1
		.			52304500848			
			.		52304501007			
				.	52304501169			
11	51001000328	Rasamento ad occhiale	Thrust plate	2
12	50602335527	Guarnizione paraolio AS 35x52x7	Oil seal AS 35x52x7	1
13	.				52302000721	Albero dentato condotto	Driven shaft	1
		.			52302000847			
			.		52302001006			
				.	52302001168			
14	50600001186	Guarnizione per rasamento	Thrust plate seal	2
15	50600001195	Guarnizione antiestrusione	Back-up ring	2
16	50600001337	Guarnizione OR	O-Ring	1
17	50401000063	Grano conico 1/8"	Plug 1/8"	1
18	50100300291	Spine forate di centraggio 18x12.5	Pins 18x12.5	4
19	50102000129	Rondella elastica	Washer	8
20	50200501451	Vite TCE M12x45	Screw M12x45	8
21	50300400198	Prigioniero M10x30 UNI 5911	Stud M10x30 UNI 5911	3
22	50101800105	Rosetta elastica	Washer	3
23	50500400014	Dado M10	Nut M10	3

IDENTIFICAZIONE ASPIRAZIONE/MANDATA / SUCTION/DELIVERY IDENTIFICATION:

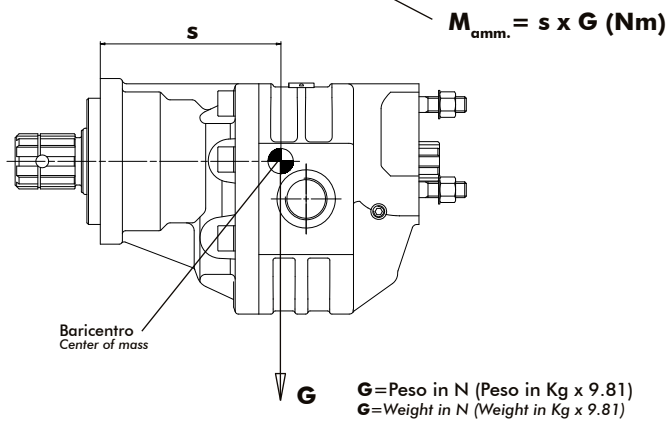
Rotazione antioraria, pompa sinistra
Anti-clockwise rotation, left pump





Rotazione oraria, pompa destra
Clockwise rotation, right pump





MOMENTO PESO / MASS MOMENT



Tipo pompa - Pump type	S
NPGH-73	113
NPGH-84	115
NPGH-100	117
NPGH-116	121

	FILETTO THREAD ISO 228	Diametro interno tubo Internal pipe diameter mm	Diametro esterno tubo External pipe diameter		CH mm	CODICE CODE		
			MIN	MAX				
ASPIRAZIONE / SUCTION  "GOLD" 45° 45° "GOLD"	G 1	38	48	51	41	15509000460		
		40	52	55		15509000488		
							15509000479	
	G 1 1/4	50	60	63	50	15509000497		
		60	68	73		15509000504		
		63	74	79		15509000522		
	G 1 1/2	50	60	63	55	15509000531		
		60	64	67		15509000540		
		63	68	73		15509000559		
	 "GOLD" 90° 90° "GOLD"	G 1/2	40	48	51	28	15510000083	
								15510000092
			25	32	35		15510000118	
							15510000127	
		32	40	43	15510000145			
							15510000154	
		G 3/4	19	29	31	34	15510000172	
			25	32	35		15510000181	
								15510000190
			32	40	43		15510000207	
								15510000216
			38	44	47		15510000252	
	G 1	40	48	51	41	15510000270		
							15510000289	
		32	40	43		15510000323		
						15510000332		
38		44	47	15510000350				
						15510000378		
40		48	51	15510000387				
						15510000396		
G 1 1/4	45	52	55	50	15510000403			
						15510000412		
	50	60	63		15510000421			
						15510000430		
	60	64	67		15510000458			
						15510000467		
	38	48	51		15510000476			
G 1 1/2	40	52	55	55	15510000485			
	45	56	59		15510000494			
						15510000501		
	50	60	63		15510000510			
						15510000529		
G 1	60	68	73	55	15510000538			
						15510000547		
	45	52	55		15510000556			
						15510000592		
	50	60	63		15510000609			
G 1 1/2	60	64	67	55	15510000654			
	63	68	73		15510000663			

	FILETTO THREAD	Diametro interno tubo Internal pipe diameter		Diametro esterno tubo External pipe diameter		CH mm	CODICE CODE
		MIN	MAX	MIN	MAX		
ASPIRAZIONE / SUCTION "GOLD" 90° FILETTO FILETTO 90° "GOLD" ON BOYH SIDES 	G 3/4 x G 3/4					34	15511000107
	G 1 x G 1					41	15511000125
	G 1 1/4 x G 1 1/4					50	15511000143
	G 1 1/2 x G 1 1/2					55	15511000161

	FILETTO THREAD	Diametro interno tubo Internal pipe diameter	CH mm	CODICE CODE
		mm		
MANDATA / DELIVERY  RACCORDO AD ALTA PRESSIONE 90° HIGH PRESSURE FITTING 90°	G 1/2 x 1/2		27	15520000126
	G 3/4 x 3/4		32	15520000340
	G 3/4 x 1			15520034100
	G 1 x 1		38	15520001009

Алматы (7273)495-231
Ангарск (3955)60-70-56
Архангельск (8182)63-90-72
Астрахань (8512)99-46-04
Барнаул (3852)73-04-60
Белгород (4722)40-23-64
Благовещенск (4162)22-76-07
Брянск (4832)59-03-52
Владивосток (423)249-28-31
Владикавказ (8672)28-90-48
Владимир (4922)49-43-18
Волгоград (844)278-03-48
Вологда (8172)26-41-59
Воронеж (473)204-51-73
Екатеринбург (343)384-55-89

Россия +7(495)268-04-70

Иваново (4932)77-34-06
Ижевск (3412)26-03-58
Иркутск (395)279-98-46
Казань (843)208-01-48
Калининград (4012)72-03-81
Калуга (4842)92-23-67
Кемерово (3842)65-04-62
Киров (8332)68-02-04
Коломна (4966)23-41-49
Кострома (4942)77-07-48
Краснодар (861)203-40-90
Красноярск (391)204-63-61
Курск (4712)77-13-04
Курган (3522)50-90-47
Липецк (4742)52-20-81

Магнитогорск (3519)55-03-13
Москва (495)268-04-70
Мурманск (8152)59-64-93
Набережные Челны (8552)20-53-41
Нижний Новгород (831)429-08-12
Новокузнецк (3843)20-46-81
Новыйорск (3496)41-32-12
Новосибирск (383)227-86-73
Омск (3812)21-46-40
Орел (4862)44-53-42
Оренбург (3532)37-68-04
Пенза (8412)22-31-16
Петрозаводск (8142)55-98-37
Псков (8112)59-10-37
Пермь (342)205-81-47

Казахстан +7(7172)727-132

Ростов-на-Дону (863)308-18-15
Рязань (4912)46-61-64
Самара (846)206-03-16
Санкт-Петербург (812)309-46-40
Саратов (845)249-38-78
Севастополь (8692)22-31-93
Саранск (8342)22-96-24
Симферополь (3652)67-13-56
Смоленск (4812)29-41-54
Сочи (862)225-72-31
Ставрополь (8652)20-65-13
Сургут (3462)77-98-35
Сыктывкар (8212)25-95-17
Тамбов (4752)50-40-97
Тверь (4822)63-31-35

Киргизия +996(312)96-26-47

Тольятти (8482)63-91-07
Томск (3822)98-41-53
Тула (4872)33-79-87
Тюмень (3452)66-21-18
Ульяновск (8422)24-23-59
Улан-Удэ (3012)59-97-51
Уфа (347)229-48-12
Хабаровск (4212)92-98-04
Чебоксары (8352)28-53-07
Челябинск (351)202-03-61
Череповец (8202)49-02-64
Чита (3022)38-34-83
Якутск (4112)23-90-97
Ярославль (4852)69-52-93