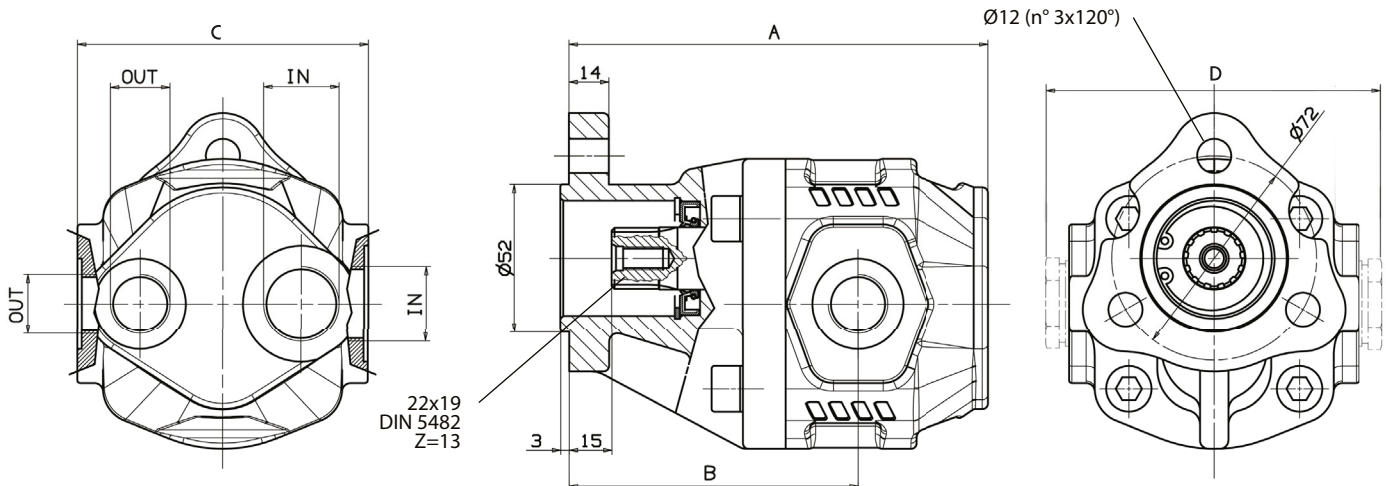


Fluido idraulico <i>Fluid</i>	Minerale o sintetico compatibile con guarnizioni: <i>Mineral or synthetic compatible with the following seals:</i> NBR, FKM, FPM, Nylon				
Viscosità cinematica consigliata <i>Kinematic viscosity suggested</i>	T media ambiente (°C) <i>Average ambient temp. (°C)</i>	< -10	-10÷10	10÷35	> 35
	VG (cSt = mm ² /s)	22	32	46	68
Viscosità cinematica ottimale di esercizio <i>Optimale kinematic viscosity</i>			VG= 10 cSt ÷ 100 cSt		
Viscosità cinematica max consentita all'avviamento <i>Max kinematic viscosity suggested at the start-up</i>			VG= 750 cSt		
Indice di viscosità consigliato <i>Viscosity index suggested</i>	VI > 100	Temperatura di esercizio <i>Working temperature</i> -15°C +100°C			
Grado di filtrazione <i>Oil filtering</i>			> 200 bar: 10 µm < 200 bar: 25 µm		
Pressione di aspirazione <i>Inlet pressure</i>			-0,3 ÷ 2 bar		
Senso di rotazione <i>Pump rotation</i>			Unidirezionale <i>Unidirectional</i>		

Ingombro / Dimensions



Dati tecnici / Technical data

Tipo pompa <i>Pump type</i>	Rotazione / Rotation		A <i>mm</i>	B <i>mm</i>	C <i>mm</i>	D <i>mm</i>	IN <i>ISO 228</i>	OUT <i>ISO 228</i>	Peso <i>Weight</i> Kg
	Sinistra / Left	Destra / Right							
NPLU-10	10500320108	10500320117	138	104	98	116	G 3/4"	G 1/2"	5.2
NPLU-12	10500320126	10500320135							
NPLU-14	10500320144	10500320153	144	98	102	120			5.4
NPLU-16	10500320162	10500320171	147,5	101,5					5.6
NPLU-20	10500320206	10500320215	154	108	173	124			5.9
NPLU-25	10500320251	10500320260	162	113					6.5
NPLU-32	10500320322	10500320331	173	124	188	124			7
NPLU-40	10500320402	10500320411	188	135					7.5

Алматы (7273)495-231
 Ангарск (3955)60-70-56
 Архангельск (8182)63-90-72
 Астрахань (8512)99-46-04
 Барнаул (3852)73-04-60
 Белгород (4722)40-23-64
 Благовещенск (4162)22-76-07
 Брянск (4832)59-03-52
 Владивосток (423)249-28-31
 Владикавказ (8672)28-90-48
 Владимир (4922)49-43-18
 Волгоград (844)278-03-48
 Вологда (8172)26-41-59
 Воронеж (473)204-51-73
 Екатеринбург (343)384-55-89

Россия +7(495)268-04-70

Иваново (4932)77-34-06
 Ижевск (3412)26-03-58
 Иркутск (395)279-98-46
 Казань (843)206-01-48
 Калининград (4012)72-03-81
 Калуга (4842)92-23-67
 Кемерово (3842)65-04-62
 Киров (8332)68-02-04
 Коломна (4966)23-41-49
 Кострома (4942)77-07-48
 Краснодар (861)203-40-90
 Красноярск (391)204-63-61
 Курск (4712)77-13-04
 Курган (3522)50-90-47
 Липецк (4742)52-20-81

Магнитогорск (3519)55-03-13
 Москва (495)268-04-70
 Мурманск (8152)59-64-93
 Набережные Челны (8552)20-53-41
 Нижний Новгород (831)429-08-12
 Новокузнецк (3843)20-46-81
 Ноябрьск (3496)41-32-12
 Омск (3812)21-46-40
 Оренбург (4862)44-53-42
 Орел (3532)37-68-04
 Пенза (8412)22-31-16
 Петрозаводск (8142)55-98-37
 Псков (8112)59-10-37
 Пермь (342)205-81-47

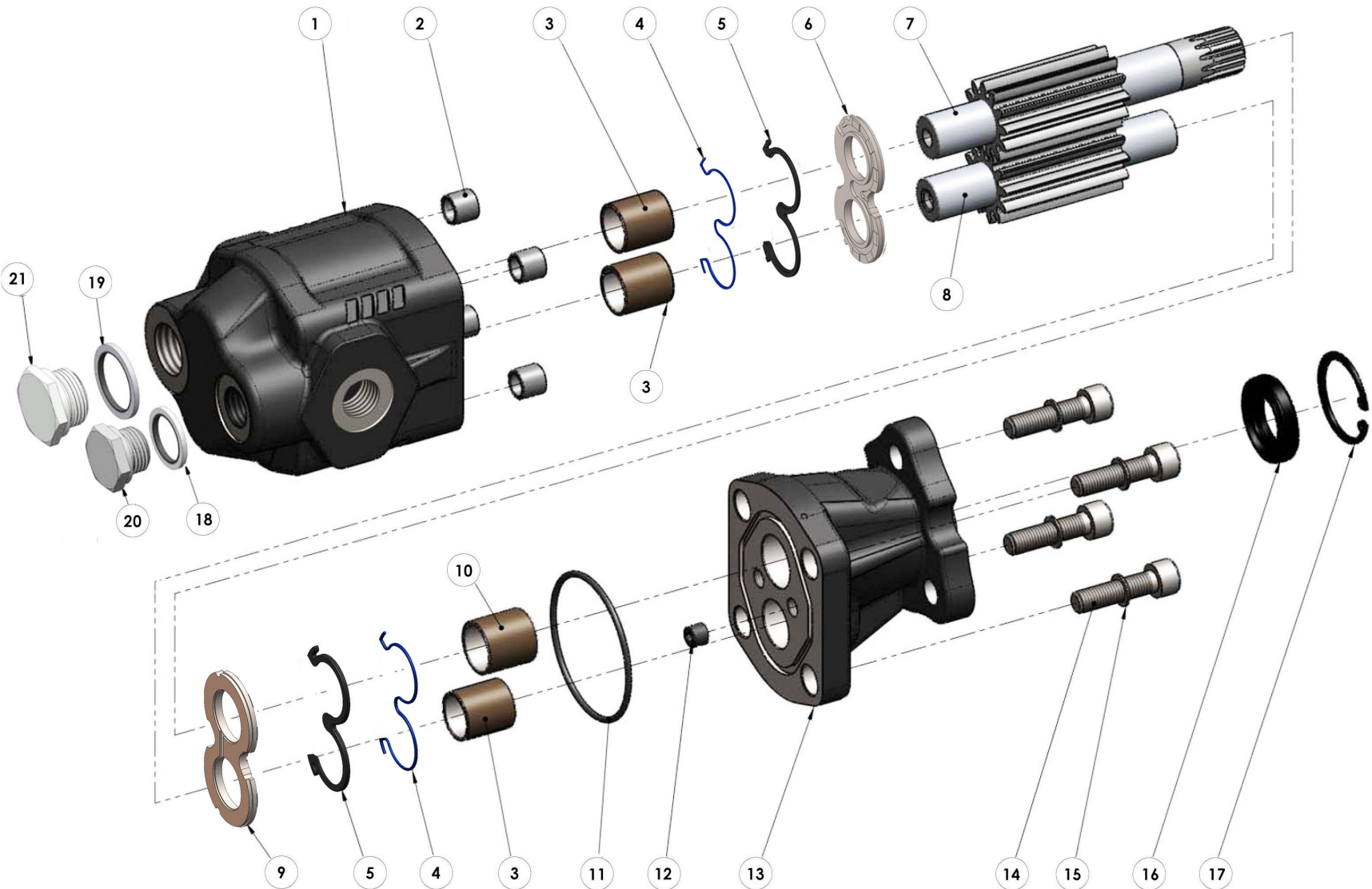
Казахстан +7(7172)727-132

Ростов-на-Дону (863)308-18-15
 Рязань (4912)46-61-64
 Самара (846)206-03-16
 Санкт-Петербург (812)309-46-40
 Саратов (845)249-38-78
 Севастополь (8692)22-31-93
 Саранск (8342)22-96-24
 Симферополь (3652)67-13-56
 Смоленск (4812)29-41-54
 Сочи (862)225-72-31
 Ставрополь (8652)20-65-13
 Сургут (3462)77-98-35
 Сыктывкар (8212)25-95-17
 Тамбов (4752)50-40-97
 Тверь (4822)63-31-35

Киргизия +996(312)96-26-47

Тольятти (8482)63-91-07
 Томск (3822)98-41-53
 Тула (4872)33-79-87
 Тюмень (3452)66-21-18
 Ульяновск (8422)24-23-59
 Улан-Удэ (3012)59-97-51
 Уфа (347)229-48-12
 Хабаровск (4212)92-98-04
 Чебоксары (8352)28-53-07
 Челябинск (351)202-03-61
 Череповец (8202)49-02-64
 Чита (3022)38-34-83
 Якутск (4112)23-90-97
 Ярославль (4852)69-52-93

Kit guarnizioni / Seal Kit	
4	10590000633
5	
11	
16	



N°	10	12	14	16	20	25	32	40	Codice/Code	Descrizione / Description		Q.
1	.								51702720107	Corpo pompa	Gear housing	1
		.							51702720125			
			.						51702720143			
				.					51702720161			
					.				51702720205			
						.			51702720250			
							.		51702720321			
							.	51702720401				
2	50100300282	Spine forate di centraggio 14x12.5	Pins 14x12.5	4
3	53300400122	Boccola autolub. 20x23x20	Bushing 20x23x20	3
								.	53300400239	Boccola autolub. 20x23x25	Bushing 20x23x25	
4	50699902372	Guarnizione antiestrusione PA6	Back-up ring PA6	2
5	50600002836	Guarnizione per rasamento HNBR	Thrust plate seal HNBR	2
6	51001000382A	Rasamento ad occhiale bronzo/acciaio	Thrust plate bronze/steel	1
7	.								52301500102	Albero dentato conduttore	Drive shaft	1
		.							52301500120			
			.						52301500148			
				.					52301500166			
					.				52301500200			
						.			52301500255			
							.		52301500326			
							.	52301500406				
8	.								52301500111	Albero dentato condotto	Driven shaft	1
		.							52301500139			
			.						52301500157			
				.					52301500175			
					.				52301500219			
						.			52301500264			
							.		52301500335			
							.	52301500415				
9	51001000248A	Rasamento ad occhiale bronzo/acciaio	Thrust plate bronze/steel	1
10	53300400113	Boccola autolub. 22x25x25	Bushing 22x25x25	1
11	50600200701	Guarnizione OR	O-Ring	1
12	50401000063	Grano conico 1/8"	Plug 1/8"	1
13	51800300250	Coperchio anteriore	Mounting cover	1
								.	51800300394			
14	.	.							50200400565	Vite TCE M10x35	Screw M10x35	4
			50200400574	Vite TCE M10x40	Screw M10x40	
15	50102000101	Rondella elastica	Washer	4
16	50602422405	Guarnizione paraolio	Oil seal	1
17	50100100373	Anello elastico	Circlip	1
18	11600910129	Rondella acciaio/gomma G 1/2"	Washer	1
19	11600910343	Rondella acciaio/gomma G 3/4"	Washer	1
20	54000200110	Tappo TE G 1/2"	Plug	1
21	54000200129	Tappo TE G 3/4"	Plug	1

CARATTERISTICHE TECNICHE DI FUNZIONAMENTO - TECHNICAL FEATURES

Tipo pompa Pump type	Cilindrata Displacement cm ³ /rev	Pressione Pressure			Velocità max. continua Max. continuous speed rpm	Velocità max. intermittente Max. intermittent speed rpm	Velocità min. Min. speed rpm
		P1	P2	P3			
		bar	bar	bar			
NPLU-10	10,06	280	310	325	2200	3000	300
NPLU-12	11,92						
NPLU-14	13,8						
NPLU-16	16,03						
NPLU-20	20,12	260	280	290	2000	2800	300
NPLU-25	25,15	220	250	260			
NPLU-32	32,04	190	210	220	1800	2500	
NPLU-40	39,93	160	180	190			

P1=Pressione max.continua
 P2=Pressione max. intermittente
 P3=Pressione max. di punta

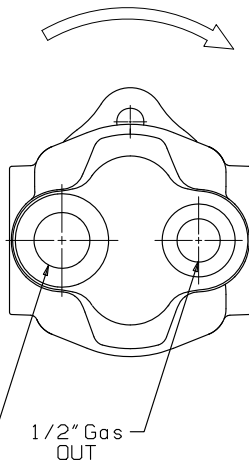
Max. continuous pressure
 Max. Intermittent pressure
 Max. peak pressure

(100%)
 (20 sec.max.)
 (6 sec.max)

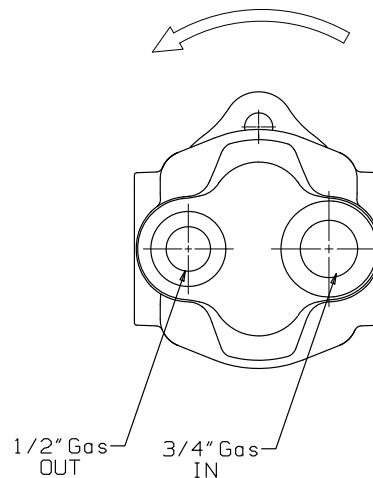
IDENTIFICAZIONE ASPIRAZIONE/MANDATA:

SUCTION/DELIVERY IDENTIFICATION:

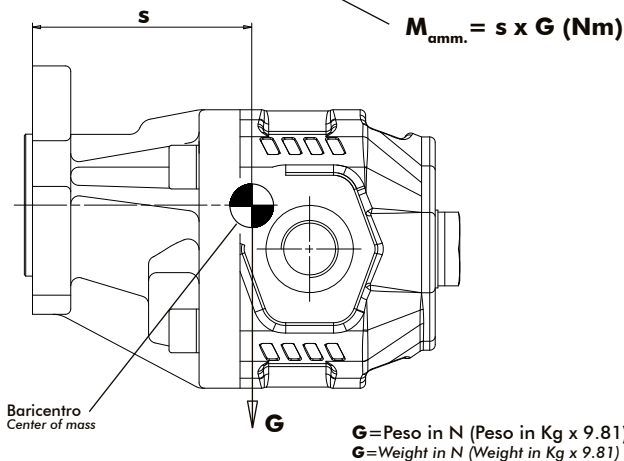
Rotazione antioraria, pompa sinistra
 Anti-clockwise rotation, left pump



Rotazione oraria, pompa destra
 Clockwise rotation, right pump



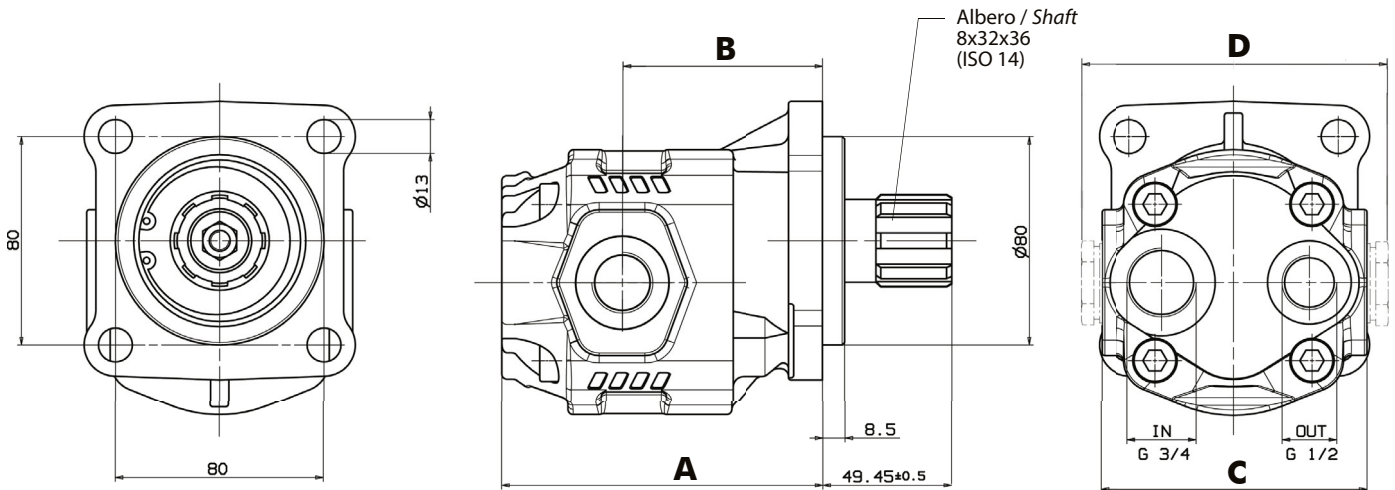
MOMENTO PESO / MASS MOMENT



Tipo pompa - Pump type	S
NPLU-10	83
NPLU-12	84
NPLU-14	85.5
NPLU-16	87
NPLU-20	91
NPLU-25	92
NPLU-32	102
NPLU-40	108



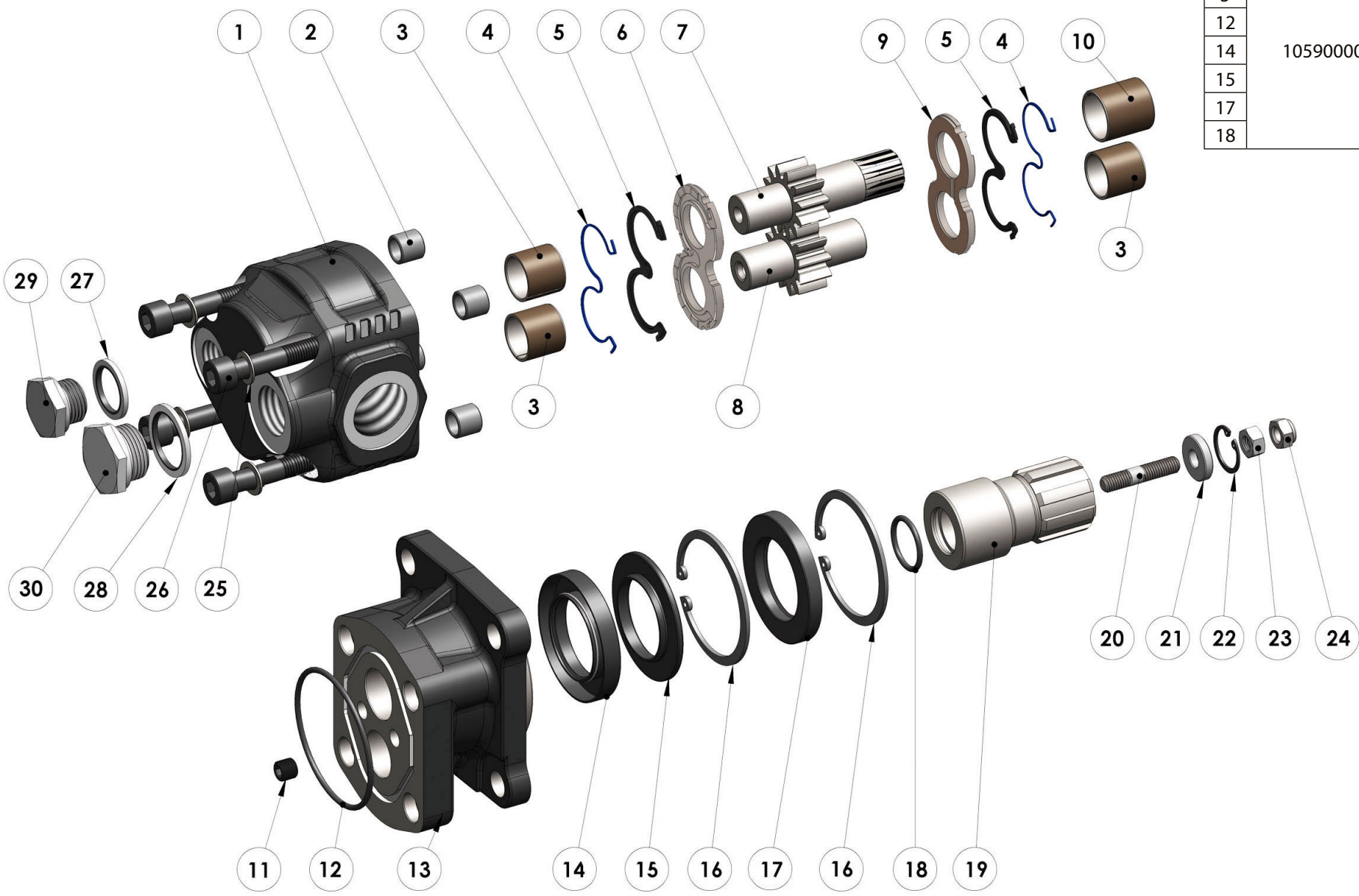
Fluido idraulico <i>Fluid</i>	Minerale o sintetico compatibile con guarnizioni: <i>Mineral or synthetic compatible with the following seals:</i> NBR, FKM, FPM, Nylon				
Viscosità cinematica consigliata <i>Kinematic viscosity suggested</i>	T media ambiente (°C) <i>Average ambient temp. (°C)</i>	< -10	-10÷10	10÷35	> 35
	VG (cSt = mm ² /s)	22	32	46	68
Viscosità cinematica ottimale di esercizio <i>Optimale kinematic viscosity</i>			VG= 10 cSt ÷ 100 cSt		
Viscosità cinematica max consentita all'avviamento <i>Max kinematic viscosity suggested at the start-up</i>			VG= 750 cSt		
Indice di viscosità consigliato <i>Viscosity index suggested</i>		VI > 100	Temperatura di esercizio <i>Working temperature</i>		
			-15°C +100°C		
Grado di filtrazione <i>Oil filtering</i>			> 200 bar: 10 µm < 200 bar: 25 µm		
Pressione di aspirazione <i>Inlet pressure</i>			-0,3 ÷ 2 bar		
Senso di rotazione <i>Pump rotation</i>			Unidirezionale <i>Unidirectional</i>		

Ingombro / Dimensions

Dati tecnici / Technical data

Tipo pompa <i>Pump type</i>	Rotazione <i>Rotation</i>		IN	OUT	A	B	C	D	Peso <i>Weight</i>
	Sinistra / Left	Destra / Right							
NPLU-10	10500340104	10500340113	ISO 228	ISO 228	mm	mm	mm	mm	6
NPLU-12	10500340122	10500340131							6.2
NPLU-14	10500340140	10500340159							6.9
NPLU-16	10500340168	10500340177							7.2
NPLU-20	10500340202	10500340211							7.8
NPLU-25	10500340257	10500340266							8.4
NPLU-32	10500340328	10500340337							9.2
NPLU-40	10500340408	10500340417							10.2


POMPE DA NON UTILIZZARE CON CARICHI ASSIALI E RADIALI SULL'ALBERO
NO AXIAL AND RADIAL LOADS ALLOWED ON PUMP SHAFT

Kit guarnizioni / Seal Kit	
4	10590000642
5	
12	
14	
15	
17	
18	



N°	10	12	14	16	20	25	32	40	Codice/Code	Descrizione / Description	Q.	
1	.								51702760109	Corpo pompa	Gear housing	
		.							51702760127			
			.						51702760145			
				.					51702760163			
					.				51702760207			
						.			51702760252			
							.		51702760323			
							.	51702760403				
2	50100300282	Spine forate di centraggio 14x12.5	Pins 14x12.5	4
3	53300400122	Boccola autolub. 20x23x20	Bushing 20x23x20	3
								.	53300400239	Boccola autolub. 20x23x25	Bushing 20x23x25	
4	50699902372	Guarnizione antiestrusione PA6	Back-up ring PA6	2
5	50600002836	Guarnizione per rasamento HNBR	Thrust plate seal HNBR	2
6	51001000382A	Rasamento ad occhiale bronzo/acciaio	Thrust plate bronze/steel	1
7	.								52301500102	Albero dentato conduttore	Drive shaft	
		.							52301500120			
			.						52301500148			
				.					52301500166			
					.				52301500200			
						.			52301500255			
							.		52301500326			
							.	52301500406				
8	.								52301500111	Albero dentato condotto	Driven shaft	
		.							52301500139			
			.						52301500157			
				.					52301500175			
					.				52301500219			
						.			52301500264			
						.		52301500335				
							.	52301500415				
9	51001000248A	Rasamento ad occhiale bronzo/acciaio	Thrust plate bronze/steel	1
10	53300400113	Boccola autolub. 22x25x25	Bushing 22x25x25	1
11	50401000063	Grano conico 1/8"	Plug 1/8"	1
12	50600200701	Guarnizione OR	O-Ring	1
13	51800300287	Coperchio anteriore	Mounting cover	1
								.	51800300401			
14	50600738627	Guarnizione paraolio	Oil seal	1
15	50602238623	Anello schermo paraolio	Ring	1
16	50100100588	Anello elastico	Circlip	2
17	50602138624	Guarnizione paraolio	Oil seal	1
18	50600200176	Guarnizione OR	O-Ring	1
19	11400500227	Manicotto	Coupling	1
20	50300300028	Prigioniero M8x28 UNI 5911	Stud M8x28 UNI 5911	1
21	52900400774	Rondella 8.4x22x4.5	Washer 8.4x22x4.5	1
22	50100100186	Anello elastico 62 I	Circlip 62 I	1
23	50500300033	Dado M8 UNI 5588	Nut M8 UNI 5588	1
24	50501000089	Dado autobloccante M8 UNI 7474	Nut M8 UNI 7474	1
25	50102000101	Rondella elastica	Washer	4
	.	.							50200400609	Vite TCE M10x55 UNI 5931 12.9	Screw TCE M10x55 UNI 5931 12.9	4
			.	.					50200410652	Vite TCE M10x65 UNI 5931 12.9	Screw TCE M10x65 UNI 5931 12.9	4
					.				50200410705	Vite TCE M10x70 UNI 5931 12.9	Screw TCE M10x70 UNI 5931 12.9	4
						.			50200410803	Vite TCE M10x80 UNI 5931 12.9	Screw TCE M10x80 UNI 5931 12.9	4
							.		50200410901	Vite TCE M10x90 UNI 5931 12.9	Screw TCE M10x90 UNI 5931 12.9	4
							.	50200400690	Vite TCE M10x100 UNI 5931 12.9	Screw TCE M10x100 UNI 5931 12.9	4	
27	11600910129	Rondella acciaio/gomma G 1/2"	Washer	2
28	11600910343	Rondella acciaio/gomma G 3/4"	Washer	2
29	54000200110	Tappo TE G 1/2"	Plug	2
30	540-002-00129	Tappo TE G 3/4"	Plug	2

CARATTERISTICHE TECNICHE DI FUNZIONAMENTO - TECHNICAL FEATURES

Tipo pompa Pump type	Cilindrata Displacement cm ³ /rev	Pressione Pressure			Velocità max. continua Max. continuous speed rpm	Velocità max. intermittente Max. intermittent speed rpm	Velocità min. Min. speed rpm
		P1	P2	P3			
NPLU-10	10,06	280	310	325	2200	3000	300
NPLU-12	11,92						
NPLU-14	13,8						
NPLU-16	16,03						
NPLU-20	20,12	260	280	290	2000	2800	300
NPLU-25	25,15	220	250	260			
NPLU-32	32,04	190	210	220	1800	2500	
NPLU-40	39,93	160	180	190			

P1=Pressione max.continua
 P2=Pressione max. intermittente
 P3=Pressione max. di punta

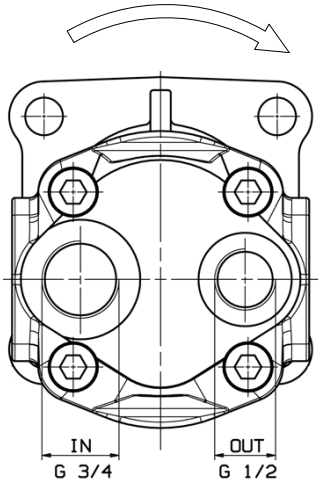
Max. continuous pressure
 Max. Intermittent pressure
 Max. peak pressure

(100%)
 (20 sec.max.)
 (6 sec.max)

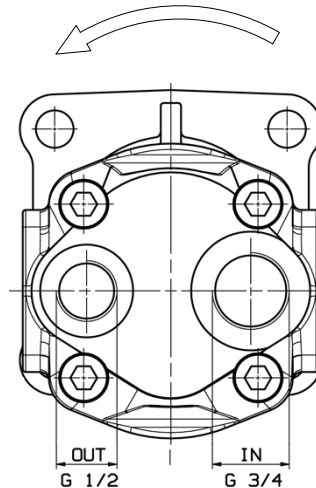
IDENTIFICAZIONE ASPIRAZIONE/MANDATA:

SUCTION/DELIVERY IDENTIFICATION:

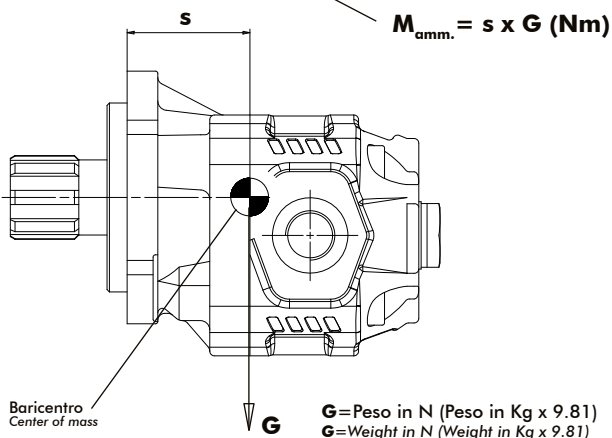
Rotazione antioraria, pompa sinistra
 Anti-clockwise rotation, left pump



Rotazione oraria, pompa destra
 Clockwise rotation, right pump



MOMENTO PESO / MASS MOMENT



Tipo pompa - Pump type	S
NPLU-10	52
NPLU-12	54
NPLU-14	55
NPLU-16	55.8
NPLU-20	57.4
NPLU-25	60
NPLU-32	69.1
NPLU-40	78.2

- Алматы (7273)495-231
- Ангарск (3955)60-70-56
- Архангельск (8182)63-90-72
- Астрахань (8512)99-46-04
- Барнаул (3852)73-04-60
- Белгород (4722)40-23-64
- Благовещенск (4162)22-76-07
- Брянск (4832)59-03-52
- Владивосток (423)249-28-31
- Владикавказ (8672)28-90-48
- Владимир (4922)49-43-18
- Волгоград (844)278-03-48
- Вологда (8172)26-41-59
- Воронеж (473)204-51-73
- Екатеринбург (343)384-55-89

- Иваново (4932)77-34-06
- Ижевск (3412)26-03-58
- Иркутск (395)279-98-46
- Казань (843)206-01-48
- Калининград (4012)72-03-81
- Калуга (4842)92-23-67
- Кемерово (3842)65-04-62
- Киров (8332)68-02-04
- Коломна (4966)23-41-49
- Кострома (4942)77-07-48
- Краснодар (861)203-40-90
- Красноярск (391)204-63-61
- Курск (4712)77-13-04
- Курган (3522)50-90-47
- Липецк (4742)52-20-81

- Магнитогорск (3519)55-03-13
- Москва (495)268-04-70
- Мурманск (8152)59-64-93
- Набережные Челны (8552)20-53-41
- Нижний Новгород (831)429-08-12
- Новокузнецк (3843)20-46-81
- Ноябрьск (3496)41-32-12
- Новосибирск (383)227-86-73
- Омск (3812)21-46-40
- Орел (4862)44-53-42
- Оренбург (3532)37-68-04
- Пенза (8412)22-31-16
- Петрозаводск (8142)55-98-37
- Псков (8112)59-10-37
- Пермь (342)205-81-47

- Ростов-на-Дону (863)308-18-15
- Рязань (4912)46-61-64
- Самара (846)206-03-16
- Санкт-Петербург (812)309-46-40
- Саратов (845)249-38-78
- Севастополь (8692)22-31-93
- Саранск (8342)22-96-24
- Симферополь (3652)67-13-56
- Омск (3812)21-46-40
- Смоленск (4812)29-41-54
- Сочи (862)225-72-31
- Ставрополь (8652)20-65-13
- Сургут (3462)77-98-35
- Сыктывкар (8212)25-95-17
- Тамбов (4752)50-40-97
- Тверь (4822)63-31-35

- Тольятти (8482)63-91-07
- Томск (3822)98-41-53
- Тула (4872)33-79-87
- Тюмень (3452)66-21-18
- Ульяновск (8422)24-23-59
- Улан-Удэ (3012)59-97-51
- Уфа (347)229-48-12
- Хабаровск (4212)92-98-04
- Чебоксары (8352)28-53-07
- Челябинск (351)202-03-61
- Череповец (8202)49-02-64
- Чита (3022)38-34-83
- Якутск (4112)23-90-97
- Ярославль (4852)69-52-93

Россия +7(495)268-04-70

Казахстан +7(7172)727-132

Киргизия +996(312)96-26-47