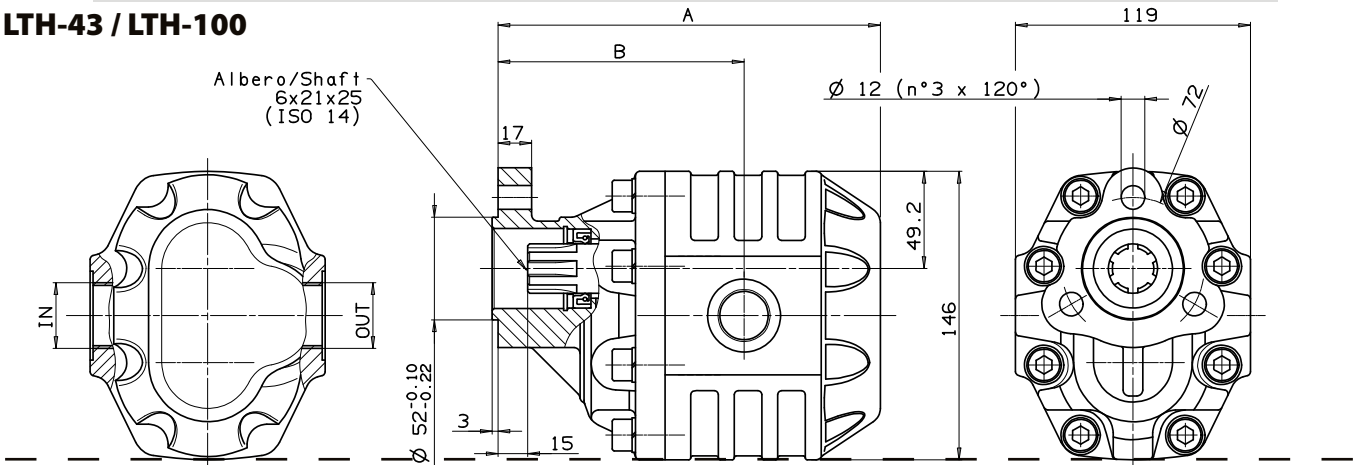


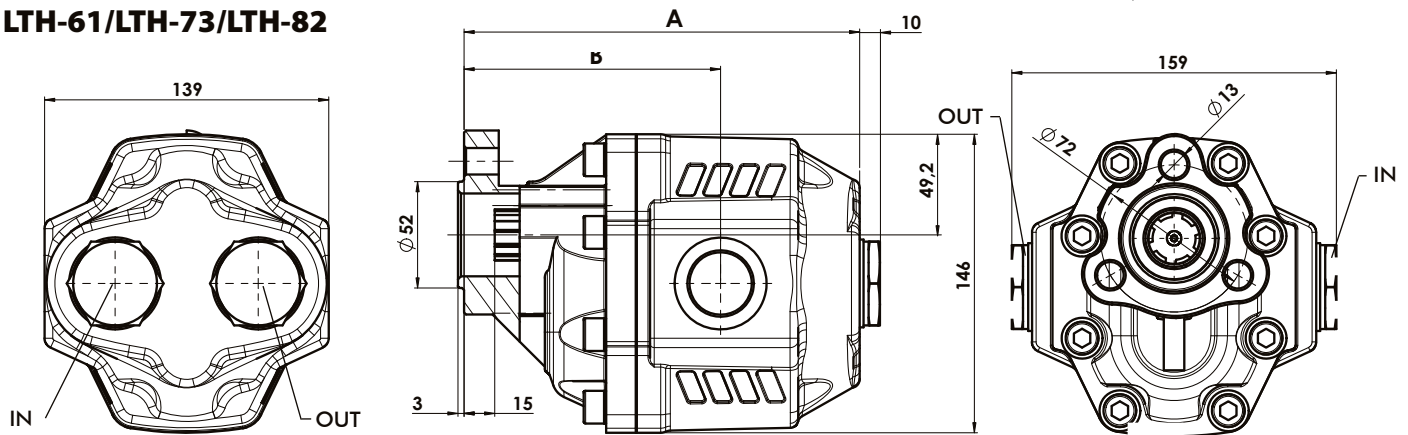
Fluido idraulico <i>Fluid</i>	Minerale o sintetico compatibile con guarnizioni: <i>Mineral or synthetic compatible with the following seals:</i> NBR, FKM, FPM, Nylon				
Viscosità cinematica consigliata <i>Kinematic viscosity suggested</i>	T media ambiente (°C) <i>Average ambient temp. (°C)</i>	< -10	-10÷10	10÷35	> 35
	VG (cSt = mm ² /s)	22	32	46	68
Viscosità cinematica ottimale di esercizio <i>Optimale kinematic viscosity</i>		VG= 10 cSt ÷ 100 cSt			
Viscosità cinematica max consentita all'avviamento <i>Max kinematic viscosity suggested at the start-up</i>		VG= 750 cSt			
Indice di viscosità consigliato <i>Viscosity index suggested</i>	VI > 100		Temperatura di esercizio <i>Working temperature</i>		
			-15°C +100°C		
Grado di filtrazione <i>Oil filtering</i>		> 200 bar: 10 µm < 200 bar: 25 µm			
Pressione di aspirazione / <i>Inlet pressure</i>		-0,3 ÷ 2 bar			
Senso di rotazione / <i>Pump rotation</i>		Bidirezionale/Bidirectional			

Ingombro / Dimensions

LTH-43 / LTH-100



LTH-61/LTH-73/LTH-82



Dati tecnici / Technical data

Tipo pompa <i>Pump type</i>	Codice ordinazione <i>Order code</i>	IN <i>ISO 228</i>	OUT <i>ISO 228</i>	A <i>mm</i>	B <i>mm</i>	Peso <i>Weight</i>
LTH-43	10502800434	G 3/4		169,5	114	11,8 Kg
LTH-61	10502800612	G 1		180,5	120,5	12,8 Kg
LTH-73	10502800738			188,5	119,5	13,3 Kg
LTH-82	10502800827			193,5	124,5	13,8 Kg
LTH-100	10502801004	G 1 1/4		210,5	138,5	14,8 Kg

Алматы (7273)495-231
Ангарск (3955)80-70-56
Архангельск (8182)63-90-72
Астрахань (8512)99-46-04
Барнаул (3852)73-04-60
Белгород (4722)40-23-64
Благовещенск (4162)22-76-07
Брянск (4832)59-03-52
Владивосток (423)249-28-31
Владикавказ (8673)28-90-48
Владимир (4922)49-43-18
Волгоград (844)278-03-48
Вологда (8172)26-41-59
Воронеж (473)204-51-73
Екатеринбург (343)384-55-89

Иваново (4932)77-34-06
Ижевск (3412)26-03-58
Иркутск (395)279-98-46
Казань (843)206-01-48
Калининград (4012)72-03-81
Калуга (4842)92-23-67
Кемерово (3842)65-04-62
Киров (8332)68-02-04
Колмна (4966)23-41-49
Кострома (4942)77-07-48
Краснодар (861)203-40-90
Красноярск (391)204-63-61
Курск (4712)77-13-04
Курган (3522)50-90-47
Липецк (4742)52-20-81

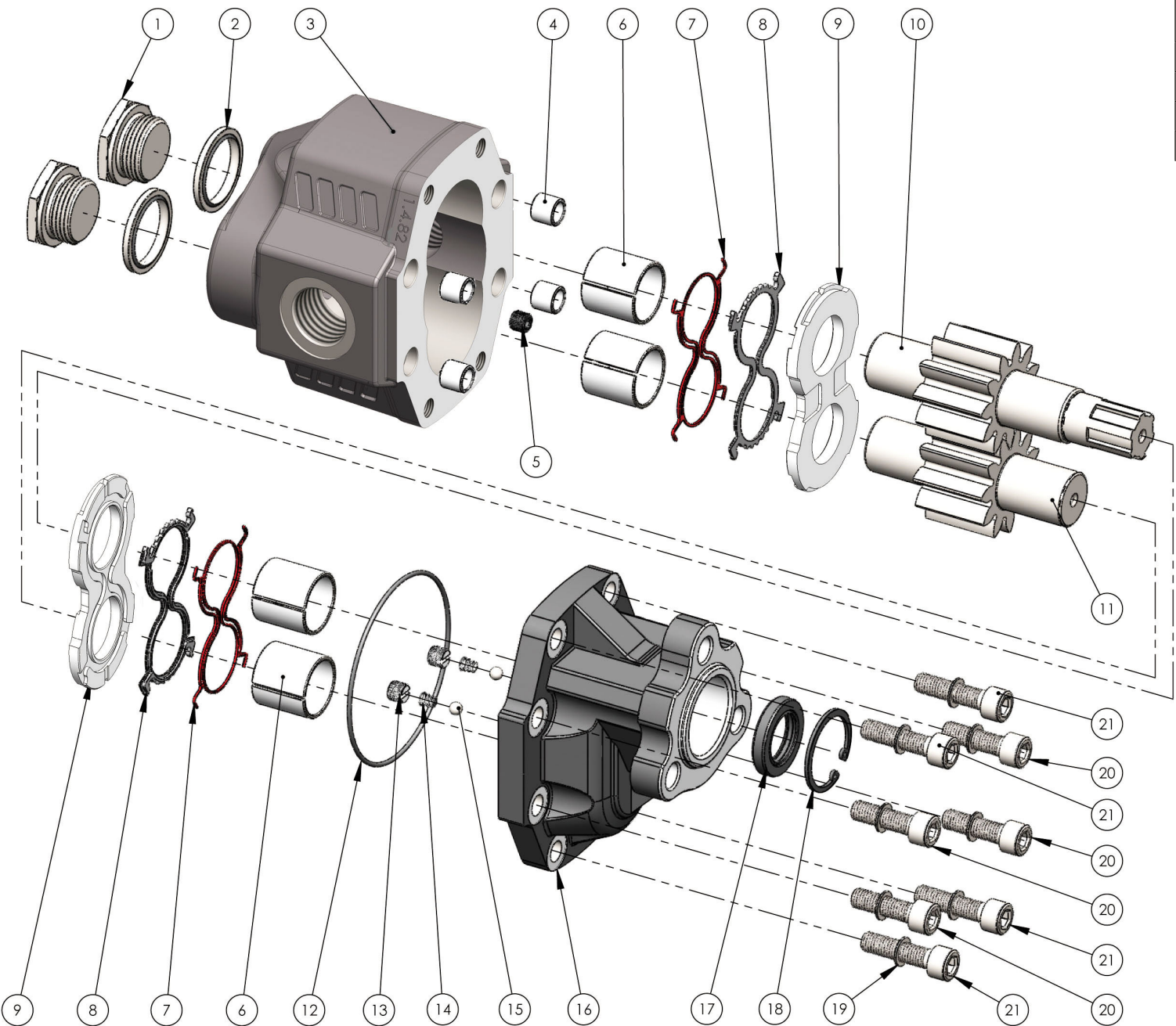
Магнитогорск (3519)55-03-13
Москва (495)268-04-70
Мурманск (8152)59-64-93
Набережные Челны (8552)20-53-41
Нижний Новгород (831)429-08-12
Новокузнецк (3843)20-46-81
Новый Уренгой (3496)41-32-12
Новосибирск (383)227-86-73
Омск (3812)21-46-40
Орел (4862)44-53-42
Оренбург (3532)37-68-04
Пенза (8412)22-31-16
Петрозаводск (8142)55-98-37
Псков (8112)59-10-37
Пермь (342)205-81-47

Ростов-на-Дону (863)308-18-15
Рязань (4912)46-61-64
Самара (846)206-03-16
Санкт-Петербург (812)309-46-40
Саратов (845)249-38-78
Севастополь (8692)22-31-93
Саранск (8342)22-96-24
Симферополь (3652)67-13-56
Смоленск (4812)29-41-54
Орел (862)225-72-31
Ставрополь (8652)20-65-13
Сургут (3462)77-98-35
Сыктывкар (8212)25-95-17
Тамбов (4752)50-40-97
Тверь (4822)63-31-35

Тольятти (8482)63-91-07
Томск (3822)98-41-53
Тула (4872)33-79-87
Тюмень (3452)66-21-18
Ульяновск (8422)24-23-59
Улан-Удэ (3012)59-97-51
Уфа (347)229-48-12
Хабаровск (4212)92-98-04
Челябинск (351)202-03-61
Челябинск (8352)28-53-07
Челябинск (351)202-03-61
Череповец (8202)49-02-64
Чита (3022)38-34-83
Якутск (4112)23-90-97
Ярославль (4852)69-52-93

Kit guarnizioni / Seal Kit

7	10590000348
8	
12	
17	



N°	43	61	73	82	100	Codice/Code	Descrizione / Description	Q.
1		.	.	.		54000200138	Tappo acciaio 1" Steel plug 1"	2
2		.	.	.		11600911002	Rondella acciaio-gomma 1" Steel-rubber washer 1"	2
3	.					51701200439	Corpo pompa Gear housing	1
		.				51701600611		
			.			51701600738		
				.		51701600827		
					.	51701201009		
4	50100300282	Spine forate di centraggio 14x10.5 Pins 14x10.5	4
5	.				.	50401000063	Grano conico 1/8" Plug 1/8"	1
6		53300400033	Boccola autolub. 28x32x30 Bushing 28x32x30	4
					.	53300400435	Boccola autolub. 30x34x35 Bushing 30x34x35	
7	50600002112	Guarnizione antiestrusione Back-up ring	2
8	50600002103	Guarnizione per rasamento Thrust plate seal	2
9		51001000337	Rasamento ad occhiale Thrust plate	2
					.	51001000355		
10	.					52302000436	Albero dentato conduttore Drive shaft	1
		.				52302000614		
			.			52302000712		
				.		52302000829		
					.	52302301003		
11	.					52302400432	Albero dentato condotto Driven shaft	1
		.				52302400610		
			.			52302400736		
				.		52302400825		
					.	52302401002		
12	50600001579	Guarnizione OR O-ring	1
13	50400000412	Grano valvola lubrificazione Lube valve screw	2
14	51200400206	Molla conica Tapered spring	2
15	51000900054	Sfera 1/4" Ball 1/4"	2
16		51800300107	Coperchio anteriore Mounting cover	1
					.	51800300134		
17	50602425401	Guarnizione paraolio Oil seal	1
18	50100100373	Anello elastico Circlip	1
19	50102000101	Rondella elastica Washer	8
20		50200400565	Vite TCE M10x35 Screw M10x35	4
21		.	.			50200400574	Vite TCE M10x40 Screw M10x40	4
	.			.	.			8

CARATTERISTICHE TECNICHE DI FUNZIONAMENTO - TECHNICAL FEATURES

Tipo pompa Pump type	Cilindrata Displacement <i>cm³/rev</i>	Pressione Pressure			Velocità max. continua Max. continuous speed <i>rpm</i>	Velocità max. intermittente Max. intermittent speed <i>rpm</i>	Velocità min. Min. speed <i>rpm</i>
		P1	P2	P3			
		<i>bar</i>	<i>bar</i>	<i>bar</i>			
LTH-43	43,12	230	240	250	1700	2250	300
LTH-61	60,06	205	225	230	1900	2500	
LTH-73	72,88	170	180	190	1500	1800	
LTH-82	81,08	205	225	230	1900	2500	
LTH-100	98,18	160	180	190	1400	1700	

P1=Pressione max.continua
 P2=Pressione max. intermittente
 P3=Pressione max. di punta

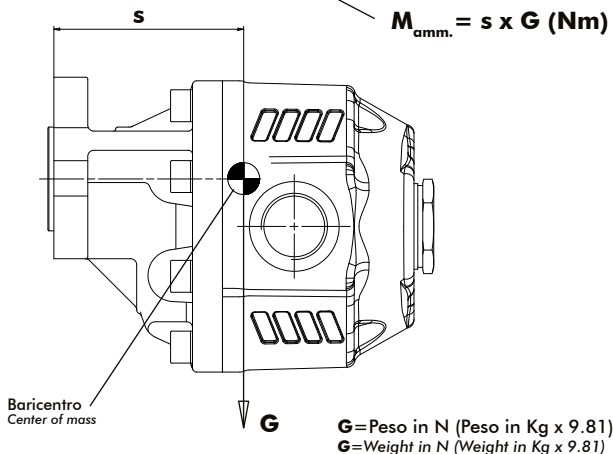
Max. continuous pressure
 Max. Intermittent pressure
 Max. peak pressure

(100%)
 (20 sec.max.)
 (6 sec.max)

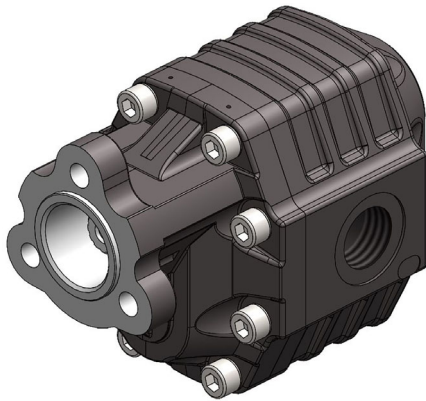
IDENTIFICAZIONE ASPIRAZIONE/MANDATA / SUCTION/DELIVERY IDENTIFICATION:

Rotazione antioraria, pompa sinistra Anti-clockwise rotation, left pump	Rotazione oraria, pompa destra Clockwise rotation, right pump
<p>Vista FRONTALE FRONT</p>	<p>Vista FRONTALE FRONT</p>

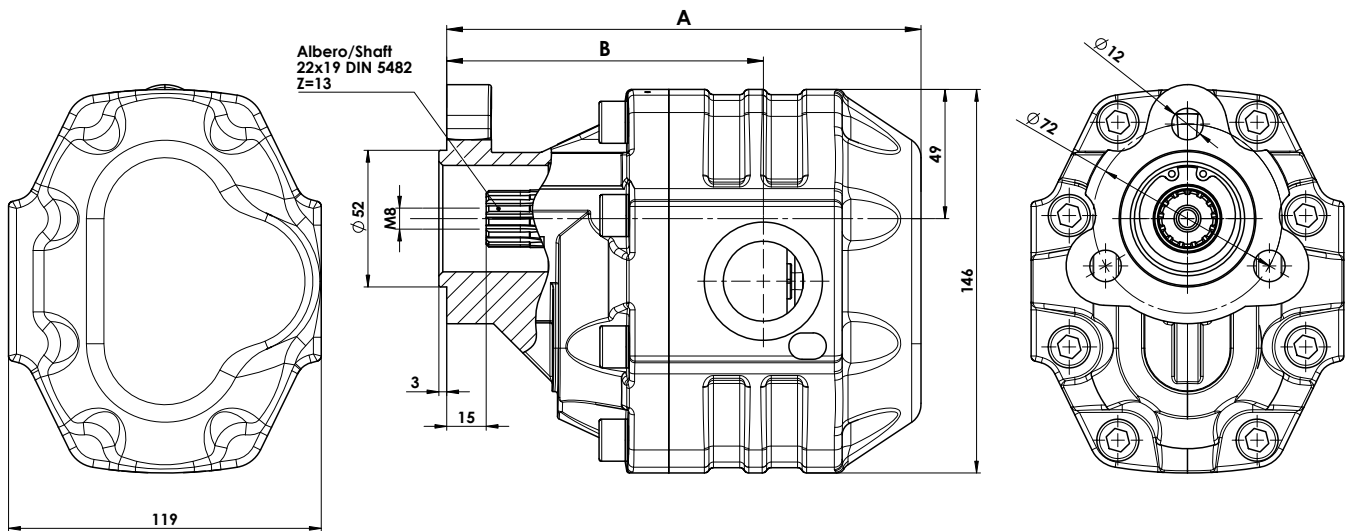
MOMENTO PESO / MASS MOMENT



Tipo pompa - Pump type	S
LTH-43	103
LTH-61	108
LTH-73	111
LTH-82	114
LTH-100	125



Fluido idraulico <i>Fluid</i>	Minerale o sintetico compatibile con guarnizioni: <i>Mineral or synthetic compatible with the following seals:</i> NBR, FKM, FPM, Nylon				
Viscosità cinematica consigliata <i>Kinematic viscosity suggested</i>	T media ambiente (°C) <i>Average ambient temp. (°C)</i>	< -10	-10÷10	10÷35	> 35
	VG (cSt = mm ² /s)	22	32	46	68
Viscosità cinematica ottimale di esercizio <i>Optimale kinematic viscosity</i>			VG= 10 cSt ÷ 100 cSt		
Viscosità cinematica max consentita all'avviamento <i>Max kinematic viscosity suggested at the start-up</i>			VG= 750 cSt		
Indice di viscosità consigliato <i>Viscosity index suggested</i>	VI > 100	Temperatura di esercizio <i>Working temperature</i> -15°C +100°C			
Grado di filtrazione <i>Oil filtering</i>			> 200 bar: 10 µm < 200 bar: 25 µm		
Pressione di aspirazione / <i>Inlet pressure</i>			-0,3 ÷ 2 bar		
Senso di rotazione / <i>Pump rotation</i>			Bidirezionale/ <i>Bidirectional</i>		

Ingombro / Dimensions

Dati tecnici / Technical data

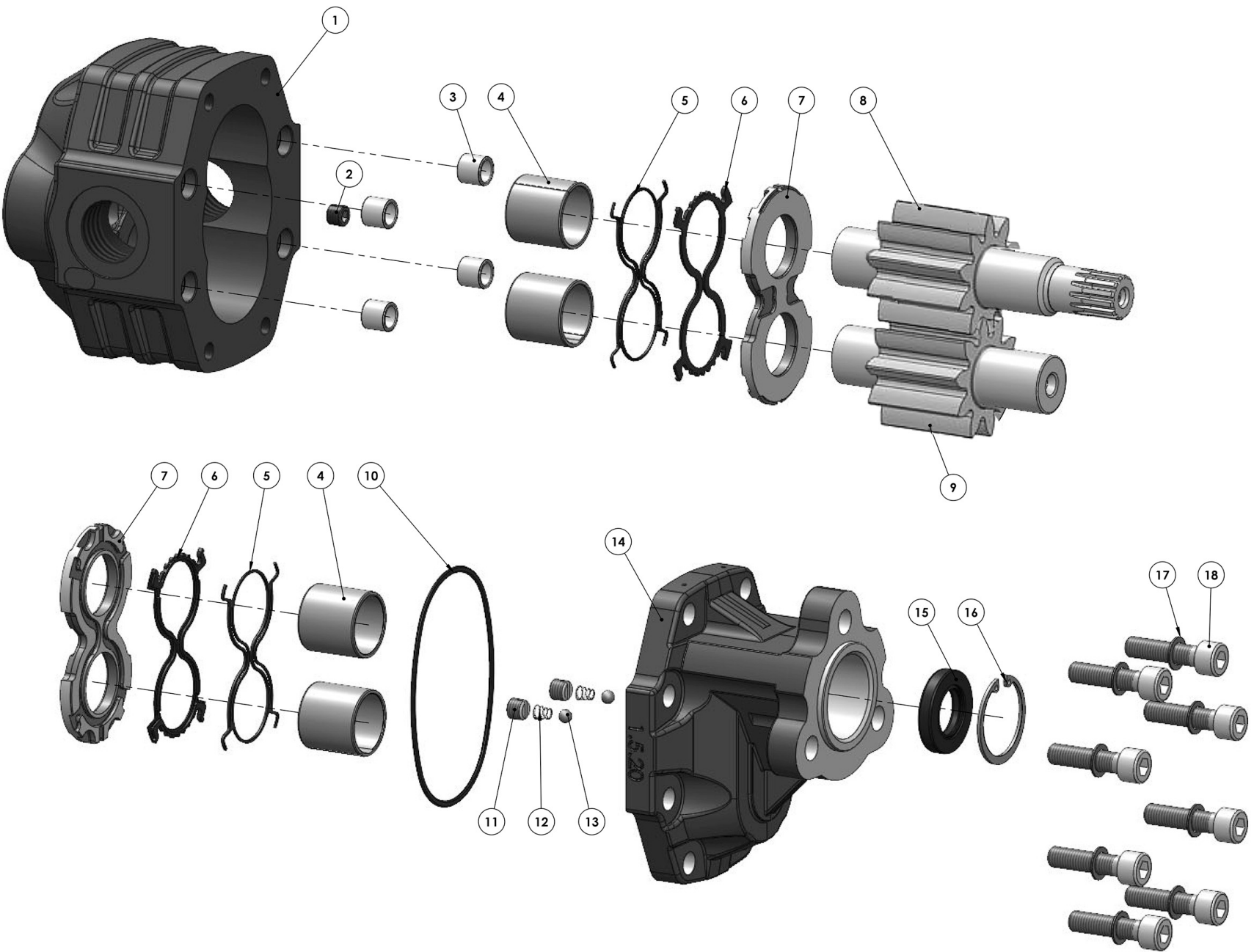
Tipo pompa <i>Pump type</i>	Cilindrata <i>Displacement</i>	Codice <i>Code</i>	IN	OUT	Pressione <i>Pressure</i>			A	B	Velocità max. continua <i>Max. continuous speed</i>	Velocità max. intermittente <i>Max. intermittent speed</i>	Velocità min. <i>Min. speed</i>	Peso <i>Weight</i>
					P1	P2	P3						
					bar	bar	bar						
LTH-61	60,06	10500133061	ISO 228	ISO 228	180	200	230	180,5	120,5	1750	2000	350	12
LTH-82	81,08	10500133082	G 1		160	180	220	193,5	125,5	1500	1750		13

P1=Pressione max.continua
P2=Pressione max. intermittente
P3=Pressione max. di punta

Max. continuous pressure
Max. Intermittent pressure
Max. peak pressure

(100%)
(20 sec.max.)
(6 sec.max.)

Esplso ricambi / Spare parts



N°	61	82	Codice/Code	Descrizione / Description		Q.
1	•		51701206193	Corpo pompa	Gear housing	1
		•	51701208244			
2	•	•	50401000063	Grano conico 1/8"	Conical screw 1/8"	1
3	•	•	50100300282	Spine forate di centraggio 14x10.5	Pins 14x10.5	4
4	•	•	53300400033	Boccola autolub. 28x32x30	Bushing 28x32x30	4
5	•	•	50600002112	Guarnizione antiestrusione	Back-up ring	2
6	•	•	50600002103	Guarnizione per rasamento	Thrust plate seal	2
7	•	•	51001000337	Rasamento ad occhiale	Thrust plate	2
8	•		52303200610	Albero dentato conduttore	Drive shaft	1
		•	52303200826			
9	•		52302400610	Albero dentato condotto	Driven shaft	1
		•	52302400825			
10	•	•	50600001579	Guarnizione OR	O-ring	1
11	•	•	50400000412	Grano valvola lubrificazione	Lube valve screw	2
12	•	•	51200400206	Molla conica	Tapered spring	2
13	•	•	51000900054	Sfera 1/4"	Ball 1/4"	2
14	•	•	51800300107	Coperchio anteriore	Mounting cover	1
10	•	•	50602422405	Guarnizione paraolio	Oil seal	1
11	•	•	50100100373	Anello elastico	Circlip	1
17	•	•	50102000101	Rondella elastica	Washer	8
18	•	•	50200400574	Vite TCE M10x40 UNI 5931	Screw M10x40 UNI 5931	8

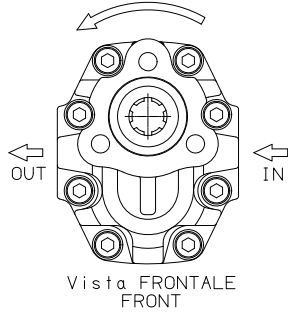


Pompe ad ingranaggi 3 fori
3 holes hydraulic gear pumps
LTH UNI DIN 5482 Z13

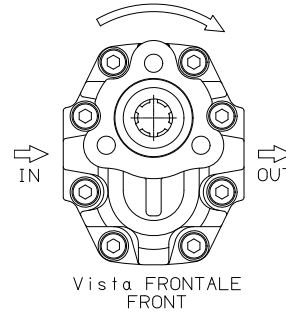
Fam. 1050013

IDENTIFICAZIONE ASPIRAZIONE/MANDATA / SUCTION/DELIVERY IDENTIFICATION:

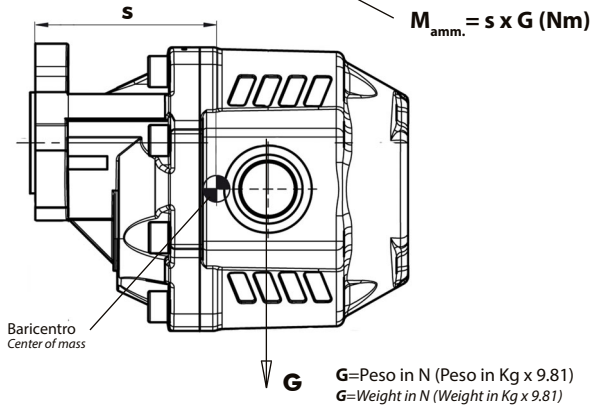
Rotazione antioraria, pompa sinistra
Anti-clockwise rotation, left pump



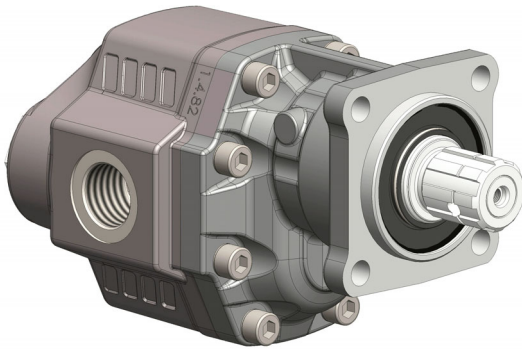
Rotazione oraria, pompa destra
Clockwise rotation, right pump



MOMENTO PESO / MASS MOMENT



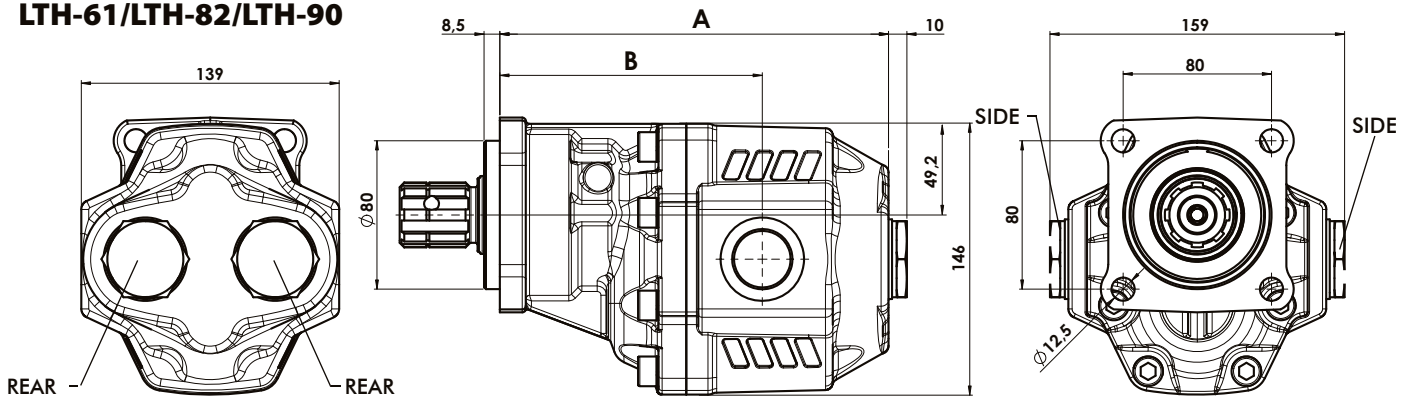
Tipo pompa - Pump type	s
LTH-61	105
LTH-82	111



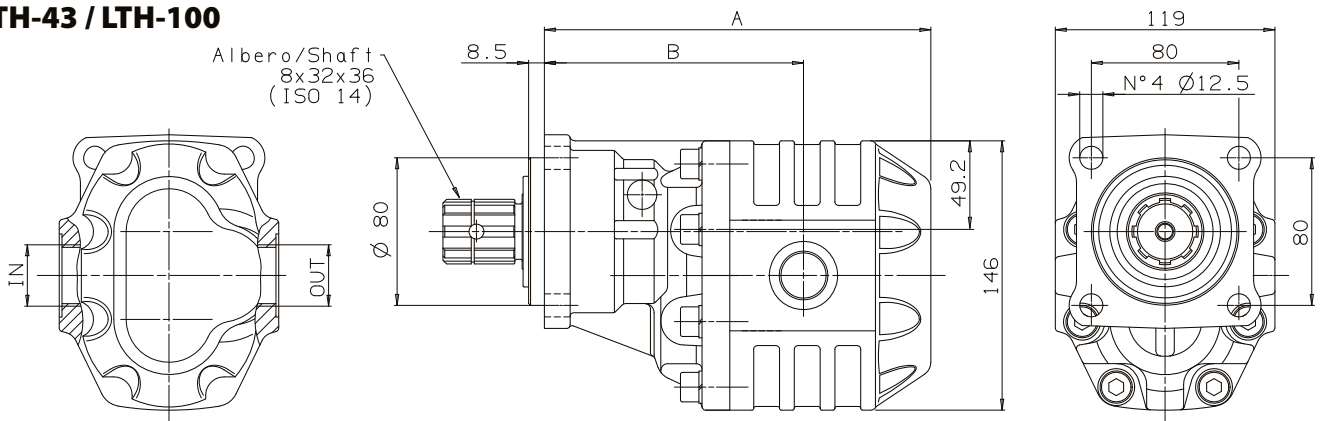
Fluido idraulico <i>Fluid</i>	Minerale o sintetico compatibile con guarnizioni: <i>Mineral or synthetic compatible with the following seals:</i> NBR, FKM, FPM, Nylon				
Viscosità cinematica consigliata <i>Kinematic viscosity suggested</i>	T media ambiente (°C) <i>Average ambient temp. (°C)</i>	< -10	-10÷10	10÷35	> 35
	VG (cSt = mm ² /s)	22	32	46	68
Viscosità cinematica ottimale di esercizio <i>Optimale kinematic viscosity</i>		VG= 10 cSt ÷ 100 cSt			
Viscosità cinematica max consentita all'avviamento <i>Max kinematic viscosity suggested at the start-up</i>		VG= 750 cSt			
Indice di viscosità consigliato <i>Viscosity index suggested</i>	VI > 100	Temperatura di esercizio <i>Working temperature</i> -15°C +100°C			
Grado di filtrazione <i>Oil filtering</i>		> 200 bar: 10 µm < 200 bar: 25 µm			
Pressione di aspirazione / Inlet pressure		-0,3 ÷ 2 bar			
Senso di rotazione / Pump rotation		Bidirezionale/Bidirectional			

Ingombro / Dimensions

LTH-61/LTH-82/LTH-90



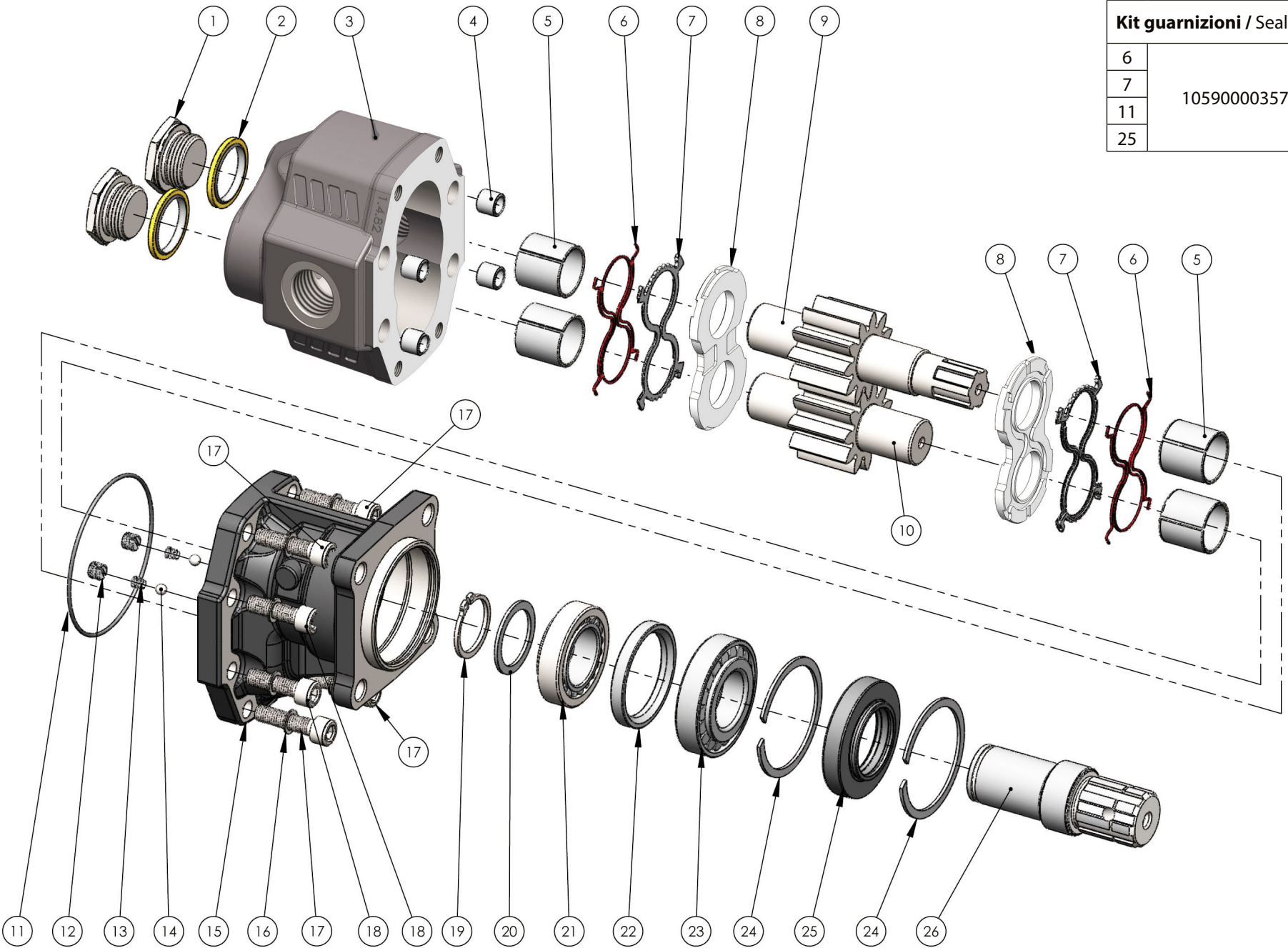
LTH-43 / LTH-100



Dati tecnici / Technical data

Tipo pompa <i>Pump type</i>	Codice ordinazione <i>Order code</i>	SIDE	REAR	A	B	Peso <i>Weight</i> Kg
		ISO 228	ISO 228	mm	mm	
LTH-43	10502810432	G 3/4		185,5	130	14,3
LTH-61	10502810610	G 1		196,5	136,5	15,3
LTH-82	10502810825			209,5	140,5	16,3
LTH-90	10502810905	G 1 1/4	G 1	211	149	17,3
LTH-100	10502811002	G 1 1/4		226,5	154,5	15,8

Kit guarnizioni / Seal Kit	
6	10590000357
7	
11	
25	



N°	43	61	82	90	100	Codice/Code	Descrizione / Description		Q.
1		.	.			54000200138	Tappo acciaio 1"	Steel plug 1"	2
				.		54000200165	Tappo acciaio 1-1/4"	Steel plug 1-1/4"	1
2		.	.			11600911002	Rondella acciaio-gomma 1"	Steel-rubber washer 1"	2
				.		11600911137	Rondella acciaio-gomma 1-1/4"	Steel-rubber washer 1-1/4"	1
3	.					51701200439	Corpo pompa	Gear housing	1
		.				51701600611			
			.			51701600827			
				.		51701600909			
4	50100300282	Spine forate di centraggio 14x10.5	Pins 14x10.5	4
	.	.	.			53300400033	Boccole autolub. 28x32x30	Bushing 28x32x30	4
5				.		53300400355	Boccole autolub. 30x34x30	Bushing 30x34x30	
					.	53300400060	Boccole autolub. 30x34x35	Bushing 30x34x35	
6	50600002112	Guarnizione antiestrusione	Back-up ring	2
7	50600002103	Guarnizione per rasamento	Thrust plate seal	2
8	.	.	.			51001000337	Rasamento ad occhiale	Thrust plate	2
				.	.	51001000355			
9	.					53202000436	Albero dentato conduttore	Drive shaft	1
		.				52302000614			
			.			52302000829			
				.		52302300924			
10					.	52302301003	Albero dentato condotto	Driven shaft	1
	.					53202400432			
		.				52302400610			
			.			52302400825			
			.		52302400905				
				.	52302401002				
11	50600001579	Guarnizione OR	O-Ring	1
12	50400000412	Grano valvola lubrificazione	Lube valve screw	2
13	51200400206	Molla conica	Tapered spring	2
14	51000900054	Sfera 1/4"	Ball 1/4"	2
15	.	.	.			51800300116	Coperchio anteriore	Mounting cover	1
				.		51800300527			
					.	51800300152			
16	50102000101	Rondella elastica	Washer	8
17	.	.				50200400574	Vite TCE M10x40	Screw M10x40	4
			.	.	.				8
18	.	.				50200400565	Vite TCE M10x35	Screw M10x35	4
19	50100001355	Anello seeger	Seeger ring	1
20	52900700208	Rondella speciale 45x35x2	Special washser 45x32x2	1
21	51000200202	Cuscinetto rulli conici 35x62x18	Tapered roller bearing 35x62x18	1
22	53000400164	Distanziale	Spacer	1
23	51000200211	Cuscinetto rulli conici 35x72x18.25	Tapered roller bearing 35x72x18,25	1
24	50100002729	Anello elastico	Circlip	2
25	50600842723	Guarnizione paraolio	Oil seal	1
26	11400500147	Manicotto	Coupling	1

CARATTERISTICHE TECNICHE DI FUNZIONAMENTO - TECHNICAL FEATURES

Tipo pompa Pump type	Cilindrata Displacement cm ³ /rev	Pressione Pressure			Velocità max. continua Max. continuous speed rpm	Velocità max. intermittente Max. intermittent speed rpm	Velocità min. Min. speed rpm
		P1	P2	P3			
		bar	bar	bar			
LTH-43	43,12	230	240	250	1700	300	
LTH-61	60,06	205	225	230	1900		
LTH-82	81,08	205	225	230	1900		
LTH-90	90,43	160	180	190	1400		
LTH-100	98,18	160	180	190	1400		

P1=Pressione max.continua
P2=Pressione max. intermittente
P3=Pressione max. di punta

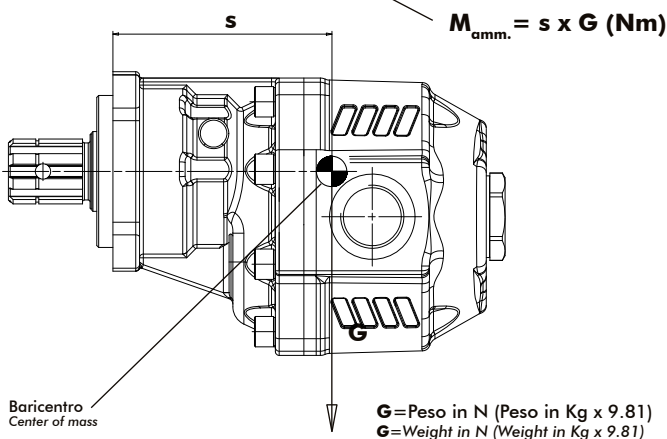
Max. continuous pressure
Max. Intermittent pressure
Max. peak pressure

(100%)
(20 sec.max.)
(6 sec.max)

IDENTIFICAZIONE ASPIRAZIONE/MANDATA / SUCTION/DELIVERY IDENTIFICATION:

Rotazione antioraria, pompa sinistra Anti-clockwise rotation, left pump	Rotazione oraria, pompa destra Clockwise rotation, right pump
<p>Vista FRONTALE FRONT</p>	<p>Vista FRONTALE FRONT</p>

MOMENTO PESO / MASS MOMENT



Tipo pompa - Pump type	S
LTH-43	105
LTH-61	109
LTH-82	117
LTH-90	120
LTH-100	125

- Алматы (7273)495-231
- Ангарск (3955)60-70-56
- Архангельск (8182)63-90-72
- Астрахань (8512)99-46-04
- Барнаул (3852)73-04-60
- Белгород (4722)40-23-64
- Благовещенск (4162)22-76-07
- Брянск (4832)59-03-52
- Владивосток (423)249-28-31
- Владикавказ (8672)28-90-48
- Владимир (4922)49-43-18
- Волгоград (844)278-03-48
- Вологда (8172)26-41-59
- Воронеж (473)204-51-73
- Екатеринбург (343)384-55-89

- Иваново (4932)77-34-06
- Ижевск (3412)26-03-58
- Иркутск (395)279-98-46
- Казань (843)206-01-48
- Калининград (4012)72-03-81
- Калуга (4842)92-23-67
- Кемерово (3842)65-04-62
- Киров (8332)68-02-04
- Коломна (4966)23-41-49
- Кострома (4942)77-07-48
- Краснодар (861)203-40-90
- Красноярск (391)204-63-61
- Курск (4712)77-13-04
- Курган (3522)50-90-47
- Липецк (4742)52-20-81

- Магнитогорск (3519)55-03-13
- Москва (495)268-04-70
- Мурманск (8152)59-64-93
- Набережные Челны (8552)20-53-41
- Нижний Новгород (831)429-08-12
- Новокузнецк (3843)20-46-81
- Новосибирск (383)227-86-73
- Омск (3812)21-46-40
- Орел (4862)44-53-42
- Оренбург (3532)37-68-04
- Пенза (8412)22-31-16
- Петрозаводск (8142)55-98-37
- Псков (8112)59-10-37
- Пермь (342)205-81-47

- Ростов-на-Дону (863)308-18-15
- Рязань (4912)46-61-64
- Самара (846)206-03-16
- Санкт-Петербург (812)309-46-40
- Саратов (845)249-38-78
- Севастополь (8692)22-31-93
- Саранск (8342)22-96-24
- Симферополь (3652)67-13-56
- Смоленск (4812)29-41-54
- Сочи (862)225-72-31
- Ставрополь (8652)20-65-13
- Сургут (3462)77-98-35
- Сыктывкар (8212)25-95-17
- Тамбов (4752)50-40-97
- Тверь (4822)63-31-35

- Тольятти (8482)63-91-07
- Томск (3822)98-41-53
- Тула (4872)33-79-87
- Тюмень (3452)66-21-18
- Ульяновск (8422)24-23-59
- Улан-Удэ (3012)59-97-51
- Уфа (347)229-48-12
- Хабаровск (4212)92-98-04
- Чебоксары (8352)28-53-07
- Челябинск (351)202-03-61
- Череповец (8202)49-02-64
- Чита (3022)38-34-83
- Якутск (4112)23-90-97
- Ярославль (4852)69-52-93

Россия +7(495)268-04-70

Казахстан +7(7172)727-132

Киргизия +996(312)96-26-47